

WELCOME TO “SEDONA”

2022 Forest River Sunseeker 2350LE (Ford)



CAMPER'S GUIDEBOOK



Quick Reference

Key Contacts

- Boundless RV 425-296-2622
- Coach-Net Roadside Assistance 877-978-7222
- Outdoorsy 877-723-7232

Safe Traveling Numbers

- Max speed = 70 MPH
- Max axle weight = 8,500 lbs rear and 5,000 lbs front
- Max gross weight = 12,500 lbs
- Weight as-rented (approximate): 10,300-10,900 lbs
- Always abide by the vehicle manual
- Height = 11'9"
- Use only Gasoline, standard 87-grade or higher

Remember To

- Always operate within weight and balance limits
- Max speed is 70 MPH, or slower in windy, crowded, curvy, wet, or other conditions
- Keep food and debris out of the sinks, drains, and toilets
- Ensure RV is kept from getting too cold
- Stay in your seatbelts while the RV is moving
- Before return: fill the gas, dump both waste tanks, and empty trash/food to avoid charges
- Have tons of fun!

Welcome!

Thank you for choosing “Sedona the Sunseeker” - we hope you find her as reliable, powerful, and fun-filled as we have! After decades of tent-camping and backpacking across the Pacific Northwest, in early 2020 our family decided to purchase our first camping trailer. We spent several dozen nights RVing that summer at destinations near and far. Collected in this book are a few of the tips and notes we’ve picked up along the way. If you need more details, we’ve also included hard copies of the appliance and equipment manuals in one of Sedona’s cabinets. Wishing you a fun and memorable camping adventure!

- The Kneale Family

A Bit About Sedona

- Born: Model Year 2022
- Height: 11’ 9” (ground to top of roof-mounted accessories)
- Length: 24’6” (bumper to bumper)
- Width: 8’ 5”
- Weight: Up to 12,500 lbs fully-loaded
- Fuel Capacity: 50gal 87-octane or higher Gasoline
- Water Tank Capacities: 44gal Fresh, 39gal Grey, 39gal Black, 6gal Hot
- Propane Capacity: up to 40lbs
- Battery Capacity: up to 64AH usable
- Sleeps: 5 adults, or 7 with kids. Plus your pet!
- Superpowers: Spacious interior on a compact chassis means this RV takes less space at the campground and is easier to drive. Rooftop solar and onboard generator provide off-grid living!
- Favorite Destination So Far: Springtime boondocking through Nevada’s Great Basin desert

In This Guidebook

Quick Reference.....	2
Welcome!	3
A Bit About Sedona.....	3
A Clean and Fully-Equipped RV.....	4
Pre-Trip: Load, Weigh, and Balance	6
On the Road	7
We’re There!	9
Powering Life at Camp	10
Enjoying Life at Camp	14
Cold Weather Operations	17
Road Trip!.....	18

A Clean and Fully-Equipped RV

Before each trip Sedona is prepared to the same high standard we'd expect for our family. All mechanical components of the RV, wheels, and suspension have been inspected and maintained at frequent intervals. The exterior has been cleaned. Inside, all contents were removed so every surface could be fully cleaned and disinfected, bedding/towels laundered, and dishes/cookware washed. Sedona is equipped with everything you need for your adventure. Don't hesitate to reach out with questions!

Included – Cook & Eat

Place settings – Corelle plates and bowls, Stainless Steel cups, forks, knives, spoons	Compostable place settings and utensils (bowls, plates, cups, forks, knives, spoons)
Large pot w/lid	Can opener
Medium pot w/ lid	Wine opener
Pan	Knives - steak & chef
Mixing bowl	Salt, pepper
Kettle	Ziplock bags
Colander	Pen
Collapsible wash tub	Scissors
Cutting board	Hot pad potholder
Spatula	Kitchen towels
Cooking spoon	Aluminum foil
Tongs	Lighter
Pour-over coffee filter & paper filters	Extra paper towels

Included – Bed & Bath

Extra RV toilet paper	Bedding sets (sheets, pillow w/ cover, blanket)
Towels	

Included – Cleaning & Comfort Supplies

Cleaning cloths (yellow/orange)	Foaming soap dispenser(s)
Broom	Trashbags
Bronner's soap (dilute per instructions)	Undersink trashcan
Bathroom spray cleaner	Sponge
Thetford bio tank treatment	

Included – RV Equipment

Wheel chocks – 1 or 2 pair	10 “stacker” leveling blocks OR 2 leveling ramps
Fresh water hose (blue) and pressure regulator	Sewer tank dump hose & elbow fitting
Black tank rinse hose (black) (if equipped)	Flashlight
30A power cord and surge protector	15A-30A power cord adapter
Spare fuse set	Propane tank level gauge
Sewer hose support “slinky”	Camper's Guide & Manuals
Small household toolkit	Tasty treats & rental paperwork

Optional – Campsite Supply Drop

Necessities for around camp

- Cooler
- Propane Camping Grill
- Camp chairs

Optional – Off-Grid

Planning to live off-grid? You may need more energy to fuel the fun:

- Additional portable ~100W solar panel that plugs into RV's charge port or battery
- Provides min 30lb propane at departure (vs. min 15 standard)

Roadside Assistance

Included with your rental by Coach-Net Services!

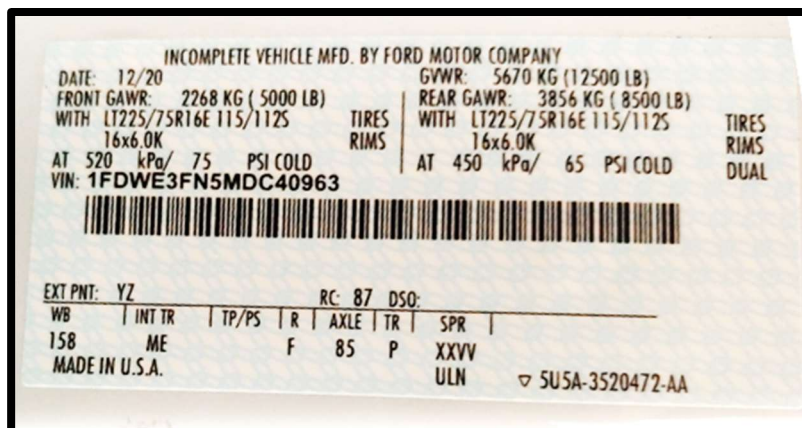
- Provides coverage for Towing, Flat Tire Assistance, Battery Boost, and Mobile Mechanic.
- Provides 24/7 RV technical support hotline and trip planning services
- Details at https://drive.google.com/file/d/1cOUfeMgKZnlBSzB_mzdsAAK0g0Zx93rg/view?pli=1

Pre-Trip: Load, Weigh, and Balance

To provide a safe journey to your destination it's critical that Sedona is correctly loaded and operated at all times within the requirements set by the manufacturers.

Know Sedona's Capabilities

During chassis manufacturing the official weights and limits were printed on the body.



Max Gross Weight: 12,500 lbs

Max Axle Weight: 8,500 lbs (Rear)

Max Axle Weight: 5,000 lbs (Front)

To ensure you stay within these requirements, you'll need to limit the weight you're adding to the RV and be strategic on how you pack it.

Verify Sedona's Gross Weight Meets Limits

The RV (including the provided equipment, 6gal in the hot tank, and ~10gal in the fresh tank) weighs approximately 10,300-10,900 lbs gross. You can add no more food, clothing, water, and gear than the limits provided by the RV chassis. If in doubt break out a scale to weigh your cargo, and don't hesitate to drive onto a commercial truck scale.

Verify Sedona Balance Meets Limits

To maintain acceptable axle weights, you'll need to thoughtfully decide where cargo can be stored. Generally, you want to add cargo weight evenly across the storage compartments. The rear passthrough compartment is great for bulky items, while heavy items can be stowed further forward, and the interior cabinets are handy for clothes and food.



NUMEROUS STORAGE AREAS

Watch the Water!

Sedona's blessing and her curse are the large-capacity tanks - she can go days without a refresh but also requires careful weight management. Each gallon of water weighs 8.4 lbs, so a full freshwater tank will weigh nearly 400 lbs! As some tanks drain and others fill, the weight distribution will change. While specifics depend on your loading situation, in general you'll usually want to dump tanks before towing, and travel with black, grey, and fresh tanks no fuller than required.

On the Road

Driving an RV demands more attention and care than normal driving - read the vehicle's manual carefully and abide by it. Review online articles on RV driving or take a peek at YouTube. Take a few minutes pre-trip in an open parking lot or neighborhood roads to try out driving, cornering, and parking. Slow and steady will win this race! Of course, having your own kitchen and bathroom with you means you can take your time – enjoy the journey!

General Tips

Speed - Obey the speed limit for all roads (truck speed if posted). Particularly watch out for turns that require reduced speeds. **Do not exceed 70MPH.** The faster you drive, the less stable the RV will handle.

Cornering – Remember to keep turns wide like a truck, and that the RV's back bumper will swing out a bit.

Handling – Be cognizant of your increased width - narrow roads (for example in construction zones, and some 2-lane rural roads) sometimes allow only a couple inches of clearance on each side. Take it slow.

Brakes – Never ride the brakes! Allow increased space.

Reversing – Your backup camera helps but it's fisheye lens is deceiving. Have a spotter outside to help!

Height – Sedona is **11' 9" tall!** Keep an eye out for anything overhead- low bridges, tree branches, or roadside signs to name a few. She is too tall for almost all drive-thru lanes.

Look down the road and anticipate – you'll need to brake sooner to stop for obstacles or achieve cornering speeds

Hills and Mountains

Take it easy – you won't be the fastest one on the road here! Going uphill keep an eye on engine temperatures – if temperatures start getting too warm then back off the pedal. Simply slowing down and allowing the transmission to downshift does wonders! Don't be shy about using the slow lane to cross mountain pass at 50MPH (hazard lights on). Downhill is easier on engine, but you must be careful to keep speed in check and not burn out the brakes. Shift the transmission into "M" to select a lower gear and allow the engine resistance to do the majority of braking for you. Gently pump the brakes in bursts as needed – **never ride the brakes** (they will burn and then fail).

The Unexpected

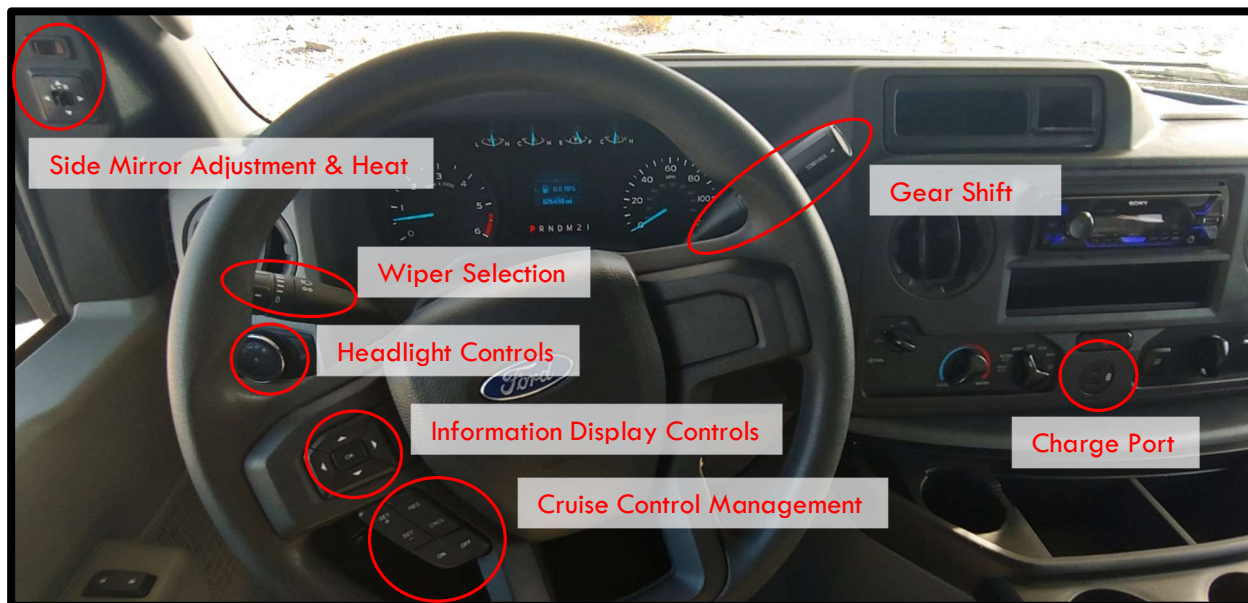
Wind Gusts – Sudden bursts can come from terrain features, weather, or passing trucks. You'll be able to mitigate many wind conditions simply by driving slower; the faster you drive, the harder gusts are to manage. In more severe wind conditions you'll want to wait out the weather.

Engine Issues – If you get a light on the dashboard, or otherwise suspect a problem with the engine, you need to stop driving and address the problem. Calling us or your **included Roadside Assistance at 877-978-7222** with questions or for dispatching help is highly recommended if at all possible.

Flat Tire – A full-size spare tire is mounted beneath the rear bumper. Verify the jack capacity is adequate to hold the RV's weight. Replacing an RV tire will require removing the hubcap, then the tire(s), and after replacing the tire using a torque wrench to step torque the lug nuts in a star pattern. Calling your **included Roadside Assistance at 877-978-7222** is highly recommended if at all possible.

Driver's Controls

Sedona is built on a Ford truck chassis and you'll recognize many features similar to a passenger car. Familiarize yourself with the location of the headlights (an "auto" option is available), high-beams, and windshield wipers. The driver's seat, rear-view display, and side-view mirrors can be adjusted to your preference. A USB-plug in the dash is for charging your phone. Cruise control can be activated and controlled from the wheel-mounted buttons. More details can be found in the Ford owner's manual.



Downshift When Heading Downhill

Try this out before you need to use it. When driving down a hill or mountain, it's **very important that you not "ride" the brakes**. Riding the brakes will cause them to overheat and stop working. Instead, to reduce your speed on a long decline you need to downshift to a lower gear. To downshift, pull the Gear Shift lever down to "M" and then use the "+" and "-" buttons on the Gear Shift lever to upshift or downshift. The current gear will display and there may be a few second lag. See manual page 92.

In-Dash Information Display

The onboard computer provides information to the in-dash display. Use the Information Display Control buttons to navigate menus – the right arrow enters a submenu and the left arrow navigates back out. Two handy features are:

- Tire pressures: Main Menu > Driver Asst> Maint Monitor> tires image
- Fuel: Main Menu > Fuel Economy > Distance to Empty



Fueling

Sedona uses **standard 87-octane or higher gasoline**, and you'll notice better economy with higher-octane gasoline. Some states offer gasoline lower than 87-octane, do not use that. Do not put in Diesel or any gasoline with more than 15% ethanol blend. Unlike your car, the fuel cap takes several complete revolutions to remove – keep turning like the cap says!

Rear-View Display

The rear-view display can be left on whenever the vehicle is driving for enhanced awareness of surrounding traffic or obstacles. You can use the On/Off button to power it down, or the M and arrow buttons to navigate through menus to modify the Brightness.

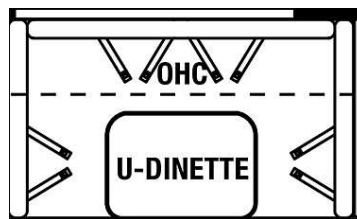


Cab Radio

The in-dash Sony radio can play AM/FM radio or stream music from your phone. To connect your phone by Bluetooth: on the radio enter the Menu by pressing the dial, rotate it to select Bluetooth, press to enter, rotate to choose Set Pairing, press to enter, rotate to choose Set Device 1 or 2, press to enter. Then perform pairing on your phone. If it asks for a pin use 0000. If you've previously paired and it hasn't connected: on the radio enter the Menu by pressing the dial, rotate it to select Bluetooth, press to enter, rotate it to choose Set BT Signl, press enter to turn on the BT signal – be sure your phone BT is on also.

Seats and Seatbelts

All occupants of the RV must remain seated and belted when the vehicle is moving, and car seats must be used for children (state laws vary as to age and size requirements). The RV driver and passenger seats have standard shoulder belts. All four seats around the dining table have lap belts, and the forward-facing and rear-facing positions also have a car seat tether anchor behind the backrest cushion. You can also remove the tabletop and lay it on the bed if it interferes with your child's carseat.



Prepare to Hit the Road

Before you roll out, do a quick walk around the RV. Make sure it is loaded correctly, all the hatches and compartments are closed and locked, and that the tires are in good shape (70psi front, 65psi rear when cold). Turn off the Propane tank before moving. Start the engine, idle about 1 minute, release the parking brake, and off you go!

We're There!

As you arrive at your destination, you'll want to first ensure your campsite will work. Is it generally level? Is there room for Sedona? Do you want to park at a certain end of the site based on the location of hookups, fire ring, low-hanging branches or other considerations? Have your spotter get out and help you into that perfect spot.

If your campsite has a slight grade, you can use the included stepped ramps under one or more wheels to lift the low side up to 3". If you lift a rear wheel use both ramps together to support both dual wheels.

Once you've got Sedona level, then set the parking brake and use chocks as needed for additional security.



Powering Life at Camp

Sedona is equally at home on a hot beach, a dry desert, or a rainy forest - each destination drives different considerations to maximize the fun! To keep your crew happy you will continually manage 4 resources: Electricity, Fresh Water, Waste Tank Capacity, and Propane. In a developed campground with full hookups this is easy! Just plug into shore power and water spigots, use what you like, then open up the waste tank dump valves when needed. In primitive campsites you'll need a more refined approach, and will rely heavily on tools like generators, chargers, and techniques to minimize wasted water.

Electricity – Battery (12V DC) & Rooftop Solar

While traveling you'll be using Sedona's "house" batteries to power most appliances. The battery meter located just inside the front door tracks battery status - hold the "BATTERY" button and the LEDs will indicate if the voltage remaining is "Low", "Fair", "Good", or "Charging". Sedona's dual lead-acid batteries have a total capacity of 128AH, and can be discharged up to 50%, meaning you have 64AH of usable capacity from fully-charged batteries. A disconnect switch just inside the front door will cut power from the batteries to the RV interior. The rooftop solar will generate power whenever the panels are in direct sunlight. You can track the status of solar power output via the Remote Meter.



BATTERY STATUS



BATTERY DISCONNECT



ROOFTOP SOLAR STATUS

Portable Solar Panel (12V DC) (Off-Grid Package)

The portable solar panel is useful when Sedona isn't getting sufficient power to the rooftop panels, and you want to avoid running the onboard generator. In those cases unfold the optional portable solar panel in a sunny location. You can plug your USB-powered devices directly into the panel's USB outputs. You can also charge Sedona's house battery bank using the alligator clamps and charge controller (the house battery bank is located under the RV stairwell).



SOLAR PANEL SETUP FOR RV CHARGING



RV HOUSE BATTERY, W/ CHARGE CLAMPS

Electricity – Shore Power (120V AC)

If your campsite has electrical hookups, plugging into “shore power” with Sedona’s power cord will charge the battery while providing AC & DC power to numerous appliances. This is the fastest and most reliable method of keeping your camper fully-powered! Please use the yellow surge protector. The dogbone adapter can be used to change the plug type if the campsite doesn’t have a 30A outlet.



SURGE PROTECTOR



DOGBONE PLUG ADAPTER



CORD W/ GENERATOR OUTLET

Electricity – Onboard Generator (120V AC)

If your campsite does not have electrical hookups, then Sedona’s onboard Onan generator can be used to create 120V power. Running it for 1-2 hours/day will keep the house batteries fully-charged, and enable you to use appliances like the microwave and AC. The generator consumes gasoline from the same tank as the RV engine at a rate of about 1 gal/hr. By design, the generator will shutoff when the gas tank reaches about 1/3 full. To use:

1. Plug Sedona’s power cord into Generator outlet
2. Push and hold the “Stop/Prime” switch for a few seconds until the “Gen” light comes on, indicating it is primed
3. Push and hold the “Start” switch a few seconds to crank the engine until it catches
4. If it doesn’t catch in 10 seconds, stop, verify the RV gas tank is at least 1/3 full and try again in 2 minutes



Propane

Sedona is equipped with a 40-lb propane tank. To use propane, turn the dial counter-clockwise to open the valve. Before driving, turn it clockwise to close the valve. If you’re on a long trip and need to refill the propane, many truck stops and U-Haul’s provide this service.



PROPANE TANK VALVE

Water – Fresh Water Supply

Plumbing distributes water to Sedona's sinks, showers, and toilet. If water is available at your campground, the best approach is to simply hookup to the spigot. **Turn off the Water Pump if hooked to City Water.** Attach the brass pressure-regulator to the spigot, then use the blue freshwater hose to connect the pressure-regulator to Sedona's "City Water Connection". You may need to purge air from the lines by running the sink a moment.

If a water spigot is not available or if you are on the road, you'll need to draw water from the Fresh Tank. Fill the tank with the blue hose through the port labeled "Fresh Water" and check approximately how much water remains by pressing "Fresh" on the Tank Status Panel. For reference, most hoses fill at roughly 5gal/minute, but this varies based on pressure. Once there is water in the tank turn on the "Pump" to pull water from the tank into Sedona's plumbing.



CITY WATER CONNECTION



FRESH TANK FILL

Tank Heaters

To brave cold temperatures, Sedona has 12V-electric heating pads attached to the fresh tank, gray tank, and black tank. These should be turned on with the appropriate Tank Heater switch whenever water is in the tank and outside temperatures are below freezing. **Ensure there is liquid in the tank before turning that tank's heater on!**

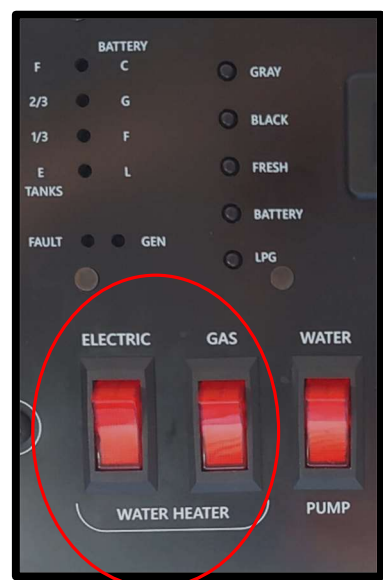
Heater	Minimum Liquid Level to Use Tank Heater
Fresh Tank	2 gallons
Gray Tank	2 gallons
Black Tank	2 gallons



The tank heaters should be used anytime cold temps are encountered while driving or camping. Keep an eye on the battery because these heaters use a lot of power! You'll need to run the generator (or plug into Shore power) frequently to keep the batteries charged while the heaters are on.

Hot Water Heater

The RV has a hot water tank (6gal capacity), which can be heated in approximately 10 minutes. To heat with Propane turn on the "Gas" switch near the front door (a red "FLT" light staying on means it did not light yet, verify the Propane tank valve is open and try again). Or to heat with Shore Power, turn on the "Electric" switch on the same panel. **Always ensure there is water in the tank before running the water heater – heating a dry tank can overheat. Turn off when not in use.**

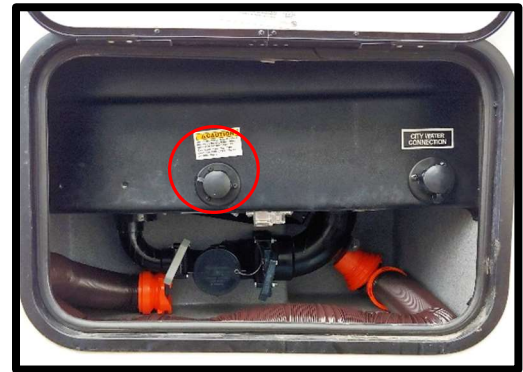


Dumping the Black & Gray Tanks – It's Not Too Scary!

Waste water tank levels are monitored by pressing “Gray” or “Black” buttons on the Tank Status Panel just inside the front door. The Gray tank holds water from the sink & shower, the Black tank from the toilet. You can use the extendable plastic hose supports when parked if you’d like to support the hose. **Keep an eye on tank levels, and never let them overflow,** which will cause very significant damage.

The black tank flush port is to inject fresh rinse water into the black tank while it is being drained, rinsing debris from the tank interior. It’s located in the same compartment as the sewer hookup. Ensure the black dump valve is open when flushing so as to not overflow the tank.

- Clean Gloves – on
- Black tank flush hose (black hose) – Install to rinse water source and RV black tank flush port
- Black & Gray Dump Valves – verify closed (“in”)
- Waste Hose – remove from storage in compartment, unscrew compartment hole cove, run waste hose through compartment hole
- RV Waste Drain – remove drain cap & attach hose
- Waste Hoes Elbow – insert into septic drain hole
- Black Dump Valve – open ... verify draining
- Black tank flush hose – Turn on & let run 1~2 mins
- Black tank flush hose – Turn off
- Black Dump Valve – close
- Gray Dump Valve – open ... verify drained, close
- Waste Hose – Disconnect, stow
- Black tank flush hose – Disconnect, stow
- Tank level – verify LED show tanks Empty
- Black Tank Thetford Bio Treatment – drop one packet down Toilet with 1 gal water or Antifreeze



BLACK TANK FLUSH PORT



RUN WASTE HOSE INTO COMPARTMENT, ATTACH TO DRAIN

Enjoying Life at Camp

Doors, Windows, & Security

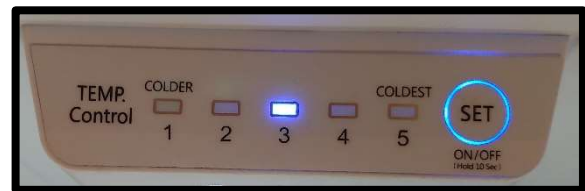
The Ford key starts the engine and opens the cab doors, the oval-shaped key the RV house door, and the small metal keys lock the passthroughs/hatches. There's also a key that can be used to lock valuables in the safe located in the steps. Windows open and close from the inside only. Be sure to double check the windows are closed before driving.

Stovetop

The 3-burner stovetop is powered by Propane, so be sure to open the Propane tank valve before use. Light the burner by turning it on and then cranking the left-most knob to crank the ignitor. Ensure the burners are fully cooled before closing the glass lid on top over the burners to avoid damage.

Refrigerator

The refrigerator is powered by 12VDC battery/solar power. It uses a lot of energy to cool itself down to temperature, but only a little to maintain its temperature. If possible, precool your food in your home fridge before putting it in the fridge, or use Shore Power during the initial cool-down. Press and hold the On/Off button about 12 seconds if you want to turn the fridge off.



Vent Fans

There are several DC-powered rooftop vent fans. You'll want to use them frequently while living in the camper to keep humidity levels down. The handles can be cranked to open the rooftop vents but be sure to close the vents if it's raining or before driving (except the hatch above the kitchen is covered and can be left open all the time).

Furnace Heating

The camper is well-insulated and stays warm with body heat most nights. On particularly cold days, the furnace can be used as well. The furnace uses DC power to run the fan, and Propane to heat. It is controlled by the thermostat in the bedroom. To activate the furnace, press the purple "On/Off" button, then "Mode" to select "Heat", then the arrows to select your desired temperature. Make sure the Propane valve is On in the compartment outside the RV so Propane is supplied.



Air Conditioner Cooling

The camper is well-insulated and stays cool, particularly if the vent fan is used to draw outside air in. On particularly warm days and if Shore Power or Generator is connected, the air conditioner can be turned on as well. Press the purple "On/Off" button, then "Mode" to select "Cool", then the arrows to select your desired temperature.

Toilet

Flush the toilet (ensure water pump or city water is on) by stepping on the foot pedal - a half push will add water to the bowl, a full push will open the dump flap to the tank. The plumbing system is not like your home - be careful that only **special RV toilet paper** and tank treatment chemicals go down the toilet. Anything else will become stuck in the tank.

Sink

There is a sink in the kitchen. To keep it smelling nice and flowing well, do not dump debris or food liquids down the drain, use the trash can instead. Remember to be water-wise and monitor water and tank levels.

Shower

Turn on the knobs to run the shower, and slide the door shower closed. Remember to be water-wise and monitor water and tank levels.

Convert Dining Table to Bed

The dining table converts into a bed measuring 80"x42". Bedding is in the closet. Loosen the knob and remove the tabletop from the post, then remove the post from the floor bracket. Set the tabletop into the grooves in the seat benches. Remove and reposition the seatback cushions to complete the full mattress.

Indoor/Outdoor Stereo AV System

Runs on DC power, press the Power button to turn on, and the Input button to cycle between Bluetooth, Radio, CD, and other options.

Optional External Grill (Camping Supply Drop Package)

The portable propane grill provided with the Supply Drop package can be plugged into the propane port located under the rear bumper.

Rear Tow Hitch

For security we keep the RV's tow hitch locked when not in use. If you'd like to have it unlocked to install your bike rack please let us know and we'll unlock it before Departure. It is not permitted to tow any trailers, boats, or other vehicles with the RV.



PROPANE GRILL PORT

Plugs

Powered by Shore Power only, the electrical outlets can be used for plugging in small electrical appliances. There are also USB plugs located near some of the beds and the driver's seat. If you accidentally trip a breaker, they can be reset at the electrical box beneath the bed.

Microwave

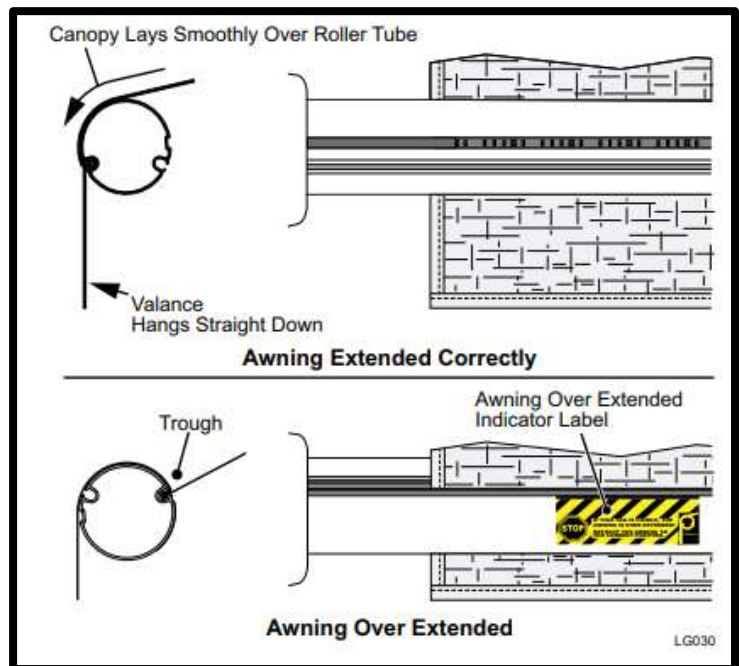
Is powered by Shore Power, the instruction manual is included with the camper.

Cleaning

Yellow/orange towels and sponges are provided for cleaning the interior. Dr Bronner's soap can be diluted 1:3 with water and used for everything – your hands, your body, washing dishes, cleaning interior walls & surfaces of the camper. It's also a relatively environmentally-friendly soap that can be used outside in a pinch. Bathroom cleaner is for the bathroom walls, toilet, and floor; glass cleaner the windows and cooktop; and stainless-steel cleaner on metal surfaces. Commercial-grade disinfecting wipes are used by our staff between rentals but we are not able to provide them to you.

Electric Awning

The large awning can be extended when in camp to shelter the camper's door or your picnic table from rain, snow, or sun. Use the Awning button located near the RV's entrance steps to extend or retract. **Be very careful not to catch the awning on the camper door or any other obstructions**, and to not over-extend it. Never move the vehicle with the awning extended. If it's raining or snowing, you may need to adjust the awning tilt to shed water and keep it from sagging, pull on one of the arms at the indicated spot to move one arm.



Cold Weather Operations

Sedona is capable of operating in some below-freezing temperatures if precautions are followed.

Winterized Cabin

Occasionally from November-February, we'll winterize Sedona before your rental. This will keep her pipes and tanks from freezing without requiring the furnace or tank heaters be used. We will blow water out of the plumbing lines, drain the fresh, hot, black, and gray tanks, and add 2 gallons of special RV Antifreeze into the black and grey tanks. You will need to fill the Fresh Water Tank up with water at your house or campsite once you're ready to start using the furnace and tank heaters. Once you've added water to the Fresh Tank, immediately run the water pump to fill the hot water tank and plumbing lines (purge air at the sink as needed). The pump will take about 5 minutes to fill the water heater tank and plumbing lines. Once you've ensured sufficient water is in each tank, then start running the tank heaters and hot water tank. **Running electric tank heaters on a dry tank is not safe.**

Keep Internal Plumbing from Freezing

To reduce the chance of freeze damage to plumbing, the fresh, gray, and black tanks in Sedona's underbelly are enclosed in 2 layers of insulation and have electric heating pads mounted on their bottom surface. Also, the furnace ducts air into the underbelly. **Once water has been added to Sedona's plumbing lines or tanks, then you need to leave the Hot Water Tank (pg 12), Tank Heaters (pg 12), and Furnace (pg 14) on at all times.** If you are driving, you'll need to turn the Furnace and Hot Water Tank off temporarily.

Keep External Plumbing from Freezing

It's not possible to insulate a water hose connecting Sedona to city water supply, instead use a hose to fill her Fresh tank, then drain and stow the hose. On particularly cold nights, some people have built skirts from insulating material or snowbanks around the outside of the RV to better insulate the underbelly and penetrations. In all cases leave the stowage compartment doors latched closed so they stay warm.

Staying Warm and Dry

Sedona is well-insulated, so as long as the furnace has propane the cabin will stay warm. One issue you might face is condensation forming, particularly after cooking or when you wake in the morning. While it sounds counterintuitive, one tip is to leave a window or vent cracked to allow humid air out of the camper. Be sure to use the vent fans when cooking, or if you see moisture accumulating. Be sure to bring plenty of propane with you – typically people use 1/8 tank of propane each day during winter camping, although obviously this varies.

Road Trip!

Planning a trip cross-country? This is a great way to see new destinations, and Sedona excels on long trips. There are a few considerations as you plan your adventure.

Route Planning and Campsite Selection

A good approach is to start with a high-level plan of the route and how far you expect to travel each day. You won't be traveling as fast in the RV, 200-300 miles will take 4-8 hours depending on conditions. Once you've targeted an area to stop for a night, you'll want to look for a good campsite. Some good resources are compendium.com, state park websites, and recreation.gov. You can typically find off-grid campsites during the week relatively easily, but for a spot with guaranteed power hookups or busy weekends you should consider reservations.

Maintenance

On extended trips you'll have to perform regular maintenance to keep Sedona rolling – skipping these steps could be dangerous! Please regularly check and service as needed:

- Tires – check tire pressures (the in-dash TPMS is a great help!), look for tire damage
- Smoke detector – push-to-test
- LP/CO detector – push-to-test
- Fire extinguisher – check gauge is green
- Look for any damage or broken components, inside and outside the RV
- Internal water lines – check for leaks, particularly at water pump and sink drain trap
- Water & sewer hoses – check for leaks
- Exterior – wash off any bird droppings / tar / etc
- Extend the awning and dry it out
- Check and top off engine fluids – windshield wash, oil, etc (see Ford manual for details)

On extremely long trips you may need to carve out time to bring Sedona in for scheduled maintenance, such as an oil change - we'll discuss this with you in those cases.

Enjoy!! Thank You!!