

WELCOME TO “ROCKY”

2020 Forest River R-Pod 172



CAMPER'S GUIDEBOOK



Quick Reference

Key Contacts

- Boundless RV 425-296-2622
- Outdoorsy 877-723-7232

Safe Towing Numbers

- Trailer max speed = 65 MPH
- Trailer max gross weight = 3,243 lbs
- Trailer max axle weight = 3,000 lbs
- Trailer tongue weight = 10-15% of trailer gross weight
- Trailer weight as-rented (approximate): 2950-3000 lbs gross, with 10% on the tongue
- Always abide by your tow vehicle manual
- Trailer height = 10'
- Ball size = 2"
- Ball height from ground = 22"
- Trailer brake controller required on your tow vehicle

Remember To

- Always operate within weight and balance limits
- Trailer max speed is 65 MPH
- Keep food and debris out of the sinks, drains, and toilets
- Ensure battery never discharges below Low Threshold (pg 12)
- Ensure camper is kept from getting too cold (pg 20)
- Never let people or pets inside the camper while it is moving
- Before return, dump both waste tanks and empty all debris/food from camper to avoid charges
- Have tons of fun!

Welcome!

Thank you for choosing “Rocky the RPod” - we hope you find him as strong, agile, and fun-filled as we have! After decades of tent-camping and backpacking across the Pacific Northwest, in the spring of 2020 our family decided to purchase our first camping trailer. We spent several dozen nights in Rocky that summer at destinations near and far. Collected in this book are a few of the tips and notes we’ve picked up along the way. Wishing you a fun and memorable camping adventure!

- The Kneale Family

A Bit About Rocky

- Born: 2019 in Salem, Oregon (Model Year 2020)
- Height: 10’ (ground to top of roof-mounted accessories)
- Length: 20’ (ball coupler to spare wheel)
- Width: 8’ (wheel to wheel)
- Weight: 3,243 lbs fully-loaded
- Water Tank Capacities: 30gal Fresh, 30gal Grey, 30gal Black, 6gal Hot
- Propane Capacity: up to 40lbs
- Battery Capacity: up to 80AH usable
- Minimum Operating Temp: 35 deg F
- Sleeps: 4 people and a pet
- Superpowers: Lifted suspension, large tires, and solar enable adventures beyond the beaten path
- Favorite Destination So Far: Dispersed camping in a New Mexico forest at 8400’

In This Guidebook

A Clean and Fully-Equipped Camper	4
Pre-Trip: Load, Weigh, and Balance	6
On the Road	7
Let’s Get Hitched!	8
We’re There!	10
Powering Life at Camp	12
Enjoying Life at Camp	16
Road Trip!.....	19

A Clean and Fully-Equipped Camper

Before each trip Rocky is prepared to the same high standard we'd expect for our family. All mechanical components of the trailer, wheels, and suspension have been inspected and maintained at frequent intervals. The exterior has been cleaned. Inside, all contents were removed so every surface could be fully cleaned and disinfected, bedding/towels laundered, and dishes/cookware washed. Rocky is equipped with everything you need for your adventure. Don't hesitate to reach out with questions!

Included – Cook & Eat

Pan	Place settings – plate, mug, fork, knife, spoon
Large pot w/lid	Paper place sets (bowl, plate, cup)
Medium pot w/ lid	Plasticware sets (fork, knife, spoon)
Mixing bowl	Knives - steak & 1 chef
Pour-over coffee filter & paper filters	Lighter
Spatulas	Salt, pepper
Cooking spoons	Extra paper towels
Tongs	Collapsible wash tub
Can opener	Dog bowls
Wine opener	Cutting board
Scissors	Hot pad potholder
Colander	Pen
Kitchen towels	Kettle

Included – Bed & Bath

Extra RV toilet paper	Bedding sets (sheets, pillow w/ cover, blanket)
Towels	

Included – Cleaning & Comfort Supplies

Cleaning cloths (yellow/white)	Foaming soap dispensers
Broom	Trashbags
Bronner's soap (dilute per instructions)	Undersink trashcan
Bathroom spray cleaner	Disinfecting wipes
Thetford bio tank treatment	Sponge

Included – Trailer Equipment

Wheel chocks – 1 or 2 pair	10 “stacker” leveling blocks OR 2 leveling ramps
Fresh water hose (blue) and pressure regulator	Sewer tank dump hose & elbow fitting
Black tank rinse hose (black) (if equipped)	Small household toolkit
30A power cord and surge protector	15A-30A power cord adapter
Spare fuse set	Propane tank level gauge
Sewer hose support “slinky”	Flashlight
Camper's Guide & Manuals	Tasty treats & rental paperwork

Optional – Off-Grid Package

Planning to utilize Rocky's off-road capabilities to spend some time in the middle of nowhere? Whether primitive sites or dispersed wilderness camping is your plan – this package expands your capabilities and confidence venturing into the great outdoors.

- Increased solar power – 100W portable solar panel added, to supplement rooftop panels
- Redundant charging – 120VAC battery charger and extension cord to plug into your car or another outlet if solar is tight
- Supplemental propane – Depart with 30lb instead of 15lb

Optional – Tow Gear Package

Borrow whatever you need from our available equipment, including:

- Portable Brake Controller – Curt 51180 Echo Mobile Electric Trailer Brake Controller with Bluetooth-Enabled Smartphone Connection, Proportional
- Hitch - Curt 45812 with 2" ball, provides up to 6.25" rise or 7.5" drop. Requires 2" hitch receiver.
- Hitch – Reese drawbar with 2" ball. Requires 2" hitch receiver.

Optional – Campsite Supply Drop

Necessities for around camp

- Cooler
- Propane Camping Grill & Aluminum foil
- Lantern
- Table cloth
- 4 Camp chairs
- Bundle of Firewood

Pre-Trip: Load, Weigh, and Balance

To provide a safe journey to your destination it's critical that both Rocky and your tow vehicle are correctly loaded and operated at all times within the requirements set by the manufacturers.

Know Your Tow Vehicle's Capabilities

Since tow vehicles vary greatly, you'll need to refer to your vehicle's manual or the manufacturer to understand the tow limits, axle limits, and gross weight limits of your tow vehicle. You'll want to know how much the vehicle weighs (full gas tank) and how much weight (people & cargo) you want to carry.

Know Rocky's Capabilities

During trailer manufacturing the official weights and limits were printed on the body.

TIRE AND LOADING INFORMATION				RENSEIGNEMENTS SUR LES PNEUS ET LE CHARGEMENT			
The combined weight of Cargo should Never Exceed: 275 Kgs or 606 Lbs				Le poids du chargement ne doit jamais dépasser 275 Kgs or 606 Lbs			
TIRE	SIZE	COLD TIRE PRESSURE	SEE OWNER'S	PNEU	DIMENSIONS	PRESSION DES PNEUS A FROID	VOIR LE MANUEL
FRONT	ST235/75R15/C	50 PSI / 345 KPA	MANUAL FOR	AVANT	ST235/75R15/C	50 lb/po2 345 KPA	DE L'USAGER
REAR			ADDITIONAL	ARRIERE			POUR PLUS DE
SPARE	ST235/75R15/C	50 PSI / 345 KPA	INFORMATION	DE SECOURS	ST235/75R15/C	50 lb/po2 345 KPA	RENSEIGNEMENTS
MANUFACTURED BY / FABRIQUE PAR: FOREST RIVER, INC.				DATE: 04/04/2019			
V.I.N./N.I.V.: 5ZT2RPF5LV018072				RPT172-47			
GROSS WEIGHT: 1471 KG 3243 LB				TYPE/TYPE: TRA/REM			
COUPLER SIZE:				THIS VEHICLE CONFORMS TO ALL APPLICABLE U.S. FEDERAL MOTOR VEHICLE SAFETY STANDARDS IN EFFECT ON THE DATE OF MANUFACTURE SHOWN ABOVE.			
GROSS WEIGHT		TIRE SIZE/PNEU		RIMS/JANTES		COLD INFL. PRESSURE/RESS DE GONFL. A FROID	
FRONT/AVANT	1361 KG (3000 LB)	ST235/75R15/C		15X8.0JJ		345 KPA SINGLE DUAL	
INTERMEDIATE	0 KG (0 LB)					0 KPA SINGLE DUAL	
REAR/ARRIERE	0 KG (0 LB)					0 KPA SINGLE DUAL	

Max Gross Weight: 3,243 lbs

Max Axle Weight: 3,000 lbs

Tongue Weight: 10-15% of Gross

To ensure you stay within these requirements, you'll need to limit the weight you're adding to the trailer, and be strategic on how you pack it.

TIRE AND LOADING INFORMATION PLACARD

Verify Rocky's Gross Weight Meets Limits

The camper (including the provided equipment, 6gal in the hot tank, and ~5gal in the fresh tank) weighs between 2950-3000 lbs gross, with about 10% of that weight on the tongue. This means you can add only a couple hundred pounds of food, clothing, water, and gear. If in doubt break out a scale, and don't hesitate to drive onto the commercial truck scale in Northbend.

Verify Rocky's Balance Meets Limits

To maintain acceptable tongue and axle weights, you'll need to thoughtfully decide where cargo can be stored. Generally, you want to add cargo to the forward half of the camper as opposed to the back (the rear passthrough is particularly bad). Store most of your belongings in the large compartment underneath the bottom bunk, and the nearby cargo net for boxes and grocery bags.

Watch the Water!

Rocky's blessing and his curse are the large-capacity tanks - he can go days without a refresh but also requires careful weight management. Each gallon of water weighs 8.4 lbs, so one full 30gal tank will weigh over 250 lbs! As some tanks drain and others fill, the weight distribution will change (fresh & hot tanks are aft of the axle, grey & black tanks are forward). While specifics depend on your loading situation, in general you'll usually dump tanks before towing, and travel with black, grey, and fresh tanks no more than 1/3 full.



UNDER-BUNK STOWAGE & CARGO NETS

On the Road

Towing demands more attention and care than normal driving - read your tow vehicle's manual carefully and abide by it. Review Outdoorsy's article on trailer towing or take a peek at YouTube. Take a few minutes pre-trip in an open parking lot to try out driving, cornering, and parking. Slow and steady will win this race! Of course, having your own kitchen and bathroom with you means you can take your time – enjoy the journey!

General Tips

Speed - Obey the speed limit for all roads (truck speed if posted). Particularly watch out for turns that require reduced speeds. **Under no circumstances should you exceed 65MPH due to tire speed rating.**

Cornering – Remember to keep turns wide like a truck, and that the camper back end will swing out.

Handling – Be cognizant of your increased width - narrow roads (for example in construction zones, and some 2-lane rural roads) sometimes allow only a couple inches of clearance on each side. Take it slow.

Reversing – You have no rearward visibility - have a spotter outside help guide you!

Look down the road and anticipate – you'll need to brake sooner to stop for obstacles or achieve cornering speeds

Hills and Mountains

Take it easy – you won't be the fastest one on the road here! Going uphill I typically keep an eye on my oil and coolant temperatures - if temperatures start getting too warm then I back off the pedal. Simply slowing down and allowing the transmission to downshift does wonders! I'm not shy about using the slow lane to cross Snoqualmie Pass at 40MPH (hazard lights on). Downhill is easier on engine, but I'm always careful to keep my speed in check and not burn out the tow vehicle or trailer brakes. Shift your transmission into a lower gear to allow the engine resistance to do the majority of braking for you. Use the brakes in bursts as needed – **never ride the brakes** (they will burn and then fail).

The Unexpected

Trailer Sway – If you encounter the trailer swaying side-to-side, a good response is to activate the trailer brakes manually via the brake controller. Then slow down gradually and consider what caused the sway – is the trailer loaded correctly? Is your speed too high for the conditions?

Wind Gusts – Sudden bursts can come from terrain features, windy weather, or passing trucks. For most wind conditions I've had luck simply driving slower. In bad wind you'd want to wait out the weather.

Flat Tire – A full-size spare tire is mounted to the back bumper. Verify your tow vehicle's jack can hold the trailer's weight (3300 lbs). After replacing the tire, torque the lug nuts in a star-pattern (first to 25 ft-lbs, then 55 ft-lbs, then final torque to 110 ft-lbs). Calling Outdoorsy is a great option.

Outdoorsy Roadside Assistance can be reached at 1-877-250-6731

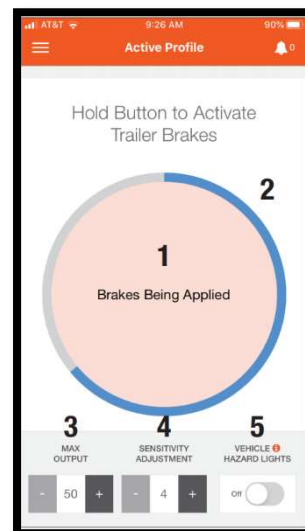
Let's Get Hitched!



CURT ECHO INSTALL TO TOW VEHICLE

Brake Controller Setup

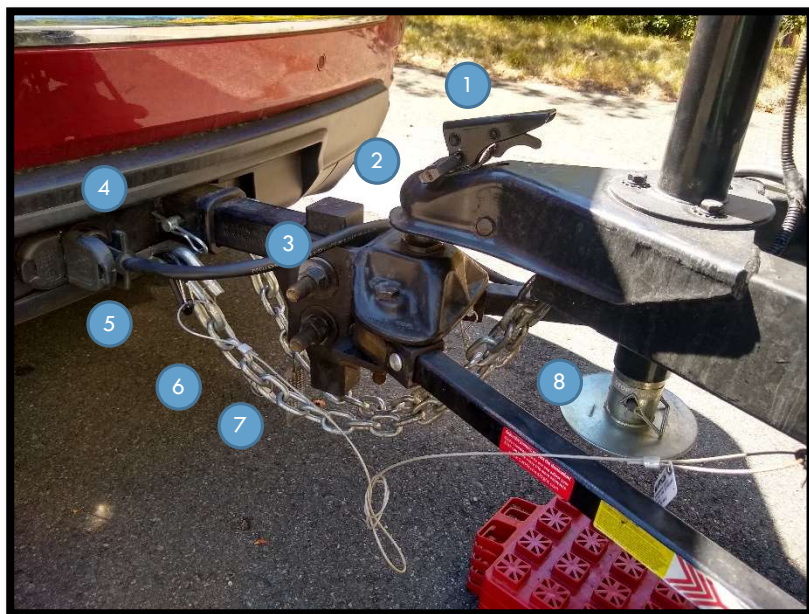
A brake controller on your tow vehicle is required to operate Rocky's electric drum brakes. If you have already purchased and installed your own brake controller, remember to recalibrate it for the new trailer. If you don't have one, using our Curt Echo portable brake controller may be a good option. Install the Curt Echo per the [manual](#) and install the app to your phone. Adjust settings as you deem best, I've previously set Max Output to 35 and Sensitivity Adjustment to 3.



CURT ECHO APP

Hitch Gear

You need a hitch with a 2" ball to connect Rocky securely to your tow vehicle. Make sure it's properly maintained, all bolts are fully tightened, and it's adjusted properly so Rocky will tow level.



A COMPLETED HITCHUP

Elements of a Good Hitch

1. Coupler locked "down"
2. Ball fully-seated in coupler
3. Wiring routed with slack
4. 7-pin connector seated/locked
5. Brake lanyard attached
6. Chains attached and crossed
7. Brake lanyard has slack
8. Tongue jack raised & secure

Checklist - Prepare for Towing

- **Trailer Weight & Balance – Verified Within Limits**
- Tow Vehicle – weight & balance, fluids, tire pressures verified, see owner's manual
- Brake Controller – installed, calibrated/adjusted, operational
- **Interior Cargo – Secured**
- Thermostat – Off
- Vent Fan – Off
- TV Antenna – Off
- Water Pump - Off
- Water Heater - Off
- **Refrigerator – Batt power mode or Off**
- Windows, Doors – Closed & Locked
- Steps & Handle - Stowed
- Tires – pressure@50psi, no uneven wear
- Water & Electrical hookups – Disconnect & stowed
- Exterior Access Panels & Waste Valves – closed
- **Propane – Off**

Checklist – Hitch Up

- Trailer chocks – Installed
- **Trailer Stabilizers – Retracted**
- Trailer Coupler – Unlock & Open
- Tongue Jack – “Up” for ball to fit beneath coupler
- Hitch – Install to hitch receiver, pin & cotter
- Tow Vehicle – Back up to align ball under coupler
- Tow Vehicle Parking Brake – Set
- Tongue Jack – “Down” until full weight of trailer on ball
- Trailer Coupler – Close & Lock
- Tongue Jack- Retract fully to tape line & pin
- Safety Chains – Install crossed
- Brake Breakaway Cable – Install to Tow Vehicle
- Wiring Harness – Install & test from Tow Vehicle
- **Visual Inspection for level trailer and proper connections**
- Trailer chocks – Remove & stow in passthrough
- Trailer passthrough compartment – close & lock

We're There!

As you arrive at your destination, you'll want to first ensure your campsite will work. Is it generally level? Is there room for Rocky and the tow vehicle? Do you want to park at a certain end of the site based on the location of hookups, fire ring, or other considerations? Have your spotter get out and help you into that perfect spot.

Checklist – Unhitch

- Tow Vehicle Parking Brake - Set
- Campsite – Verify level & safe. Do not park on grade
- Trailer – verify level side-side, if not use stackers to level (see below)
- **Trailer chocks – Installed on front & back sides of both wheels**
- Safety Chains – Remove & stow
- Brake Breakaway Lanyard – Remove & stow
- Wiring Harness – Remove & stow
- Trailer Coupler – Unlock & open
- Tongue Jack – “Up” until hitch ball will clear and tow vehicle can drive forward
- Tow Vehicle – release brake and pull forward
- Trailer Coupler – Lock in the Up position
- Tongue Jack – Up or Down as needed until trailer is level forward-back
- **Trailer Stabilizers – extend snug but not overtight (to ground + ½ turn)**



To level Rocky side-to-side use stacker leveling blocks. You can make a ramp 1, 2, or 3 levels tall depending on how much lift is needed to achieve level. This photo shows a 2-level lift. Snap the stackers together into a ramp and set just forward or aft of the low tire. Drive the camper onto the stack. Make sure to chock both the front & back wheels before unhooking the tow vehicle!



After leveling side-to-side, then level front-to-back by raising or lowering the tongue. This is typically accomplished by the electric tongue jack (button circled in photo). If the motor isn't working, install the small crank into the top hole to actuate the jack manually as shown in the photo. Extending the tongue jack past its extension or retraction limits will blow the motor fuse.

There is one stabilizing jack on each corner of Rocky to keep him steady while you walk inside. Once he's leveled and chocked, then lower the stabilizers using the large crank. The stabilizers are not rated for lifting the full trailer weight, they just need to be snug. Crank them until they touch the ground, then another $\frac{1}{2}$ crank further to firm them up.

To avoid tipping over, if the camper is not attached to your tow vehicle, **do not go inside until the stabilizers are deployed.**



Powering Life at Camp

Rocky is equally at home on a hot beach, a dry desert, or a dense forest - each destination drives different considerations to maximize the fun! To keep your crew happy you will continually manage 4 resources: Electricity, Fresh Water, Waste Tank Capacity, and Propane. In a developed campground with full hookups this is easy! Just plug into shore power and water spigots, use what you like, then open up the waste tank dump valves when needed. In primitive campsites you'll need a much more refined approach, and will rely heavily on tools like the solar panels, chargers, and techniques to minimize wasted water.

Electricity – Battery (12V DC) Power Management

While traveling, battery power is all you can use. The Victron BMV-712 battery meter located just inside the front door will track battery status. The “+” and “-” buttons cycle through displays including the battery charge remaining (in %). If equipped with the Lead-Acid battery, the Low Threshold is 50% - discharging below this value will ruin the battery (\$200 cost). If equipped with the Lithium LiFePO4 battery, the Low Threshold is 20% - discharging below this value will ruin the battery (\$1100 cost). An audible alarm will sound when the battery is discharged to within 5% of the Low Threshold and can be silenced by pushing any button. **If the battery is getting near the Low Threshold, stop power usage and recharge the battery ASAP.**



Electricity – Shore Power (120V AC)

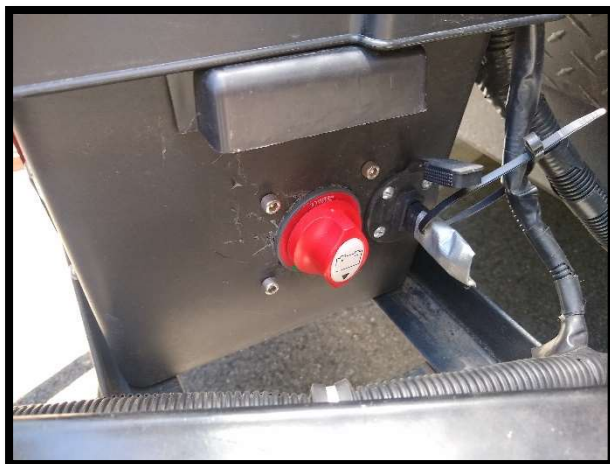
Plugging into “shore power” with the included power cords will charge the battery while providing AC & DC power to numerous appliances. This is the fastest and most reliable method of keeping your camper fully-powered! It's also the only way to power the Air Conditioner.

- Solar Charger – Turn Off via “Solar Dscnct” at Battery Box
- Shore Power Pedestal – Off
- Red 15A/30A Adapter- insert to Shore Power Pedestal if 30 Amp plug is not available
- Yellow Surge protector- insert to Shore Pedestal, cycle power briefly to check circuit (2 yellow lights should appear)
- 30A Extension cord – Align Female end to camper receptacle, align, twist clockwise, screw on ring
- 30A Extension cord – Install Male to Surge protector
- Shore Power Pedestal – On



Electricity – Solar Power

The solar system supplies additional DC power for appliances or battery charging while on the road or camping away from developed campsites. The red “Solar Dscnct” switch must be turned On for solar power to flow. Two panels on the roof supply up to 220W of power. Additionally, while parked, a supplemental 100W portable auxiliary panel can be added to the system by removing the black jumper from the solar port and installing the portable panel wire in its place. Remember to reinstall the jumper when not using the portable panel – **solar power will not work unless either the jumper or portable panel is installed into the Solar Port**. Keep the panels in direct sunlight and pointed at the sun for best performance.



SOLAR DISCONNECT SWITCH & PORT W/ JUMPER



SOLAR DISCONNECT SWITCH & PORT W/ PANEL WIRE

Electricity – 120VAC Battery Charger (Off-Grid Package)

This charger can provide 5A (75W) of DC power to the battery for recharging anywhere a 120VAC power source is available. This is a much slower charge rate than the Shore Power connection, so you'd typically only use this charger in situations where only low-amp AC outlets are available (ie- the plugs in your car interior). After opening the battery box, connect the charger's red alligator clip to the battery positive terminal, and the black alligator clip to the lower nut on the brass ground shunt (see photo). Then plug in the charger. Press the “mode” button as needed to ensure the correct battery type is lit (lithium, or as equipped).



Electricity – Craftsman Generator (Generator Package)

This inverter-generator is capable of providing 2300 running watts (3000W surge). Filling its 1-gallon tank (**89-octane gasoline or higher only**) will give you about 4 hours of run-time (depending on load). It is relatively quiet and is certified for use in all states including California (CARB-compliant). **Never run a generator indoors or near flammable materials.** The [instruction manual](#) provides details on operation. The generator is provided to you with full oil, please check it periodically and top off as needed. It weighs 60lbs, so be careful with yourself! Keep it upright and tie it down during transport so it won't tip. To hookup Buzz to the generator, first start the generator and let it warm up briefly. Turn off the “Main” circuit in Buzz's breaker box. Plug the female end of the Shore Power line into Buzz (see Shore Power section). Then use the red 15A/30A adapter to plug the male end into the generator. Flick “Main” back on – you should hear the generator load up and Buzz's microwave beep on. Typically to keep the battery bank charged while camping you'll want to run the generator once or twice a day for 1-2 hours.

Water – Fresh Water Supply

Plumbing distributes water to Rocky's sinks, showers, and toilet. If water is available at your campground, the best approach is to simply hookup to the spigot. **Turn off the Water Pump if hooked to City Water.**



- RV Water Pump – Off
- City Spigot – Off
- Blue Water Hose – Connect to brass Pressure Regulator
- Blue Hose w/ Pressure Regulator – Connect to Spigot
- RV – Remove “City Water” cap and attach hose
- Spigot – On when RV is occupied, otherwise Off
- RV Sink- purge air from lines as needed

If a fresh water spigot is not available or if you are on the road, you'll need to draw water from the Fresh Tank. Fill the tank with the Blue Hose, and check approximately how much water remains by pressing “Fresh” on the Tank Status Panel.

- RV Water Pump – Off
- Fresh Water Tank – Dump remaining (dumps ~2gal/min)
- Blue Water Hose – Connect to Spigot
- RV – Remove “Fresh Water” cap and insert hose
- Spigot – On, then Off when desired (fills ~5gal/min)
- Drinking Water Hose – Remove, dry, & stow
- RV – Replace cap on “Fresh Water”
- RV Water Pump – On when occupied, otherwise Off

Hot Water

The RV is supplied with a full hot water tank (6gal capacity), which can be heated in approximately 10 minutes. To heat with Propane turn On the switch near the front door (a red fault light staying on means it did not light yet, verify the Propane tank valve is open and try again). Or to heat with Shore Power, open the water heater external door and turn On the small rocker switch inside. **Always ensure there is water in the tank before running the water heater** – heating a dry tank can overheat. **Turn off when not in use.**

Dumping the Black & Grey Tanks – It's Not Too Scary!

Waste water tank levels are monitored by pressing “Grey” or “Black” buttons on the Tank Status Panel just inside the front door. The Grey tank holds water from the sink & shower, the Black tank from the toilet.

You can use the “Sidewinder” plastic supports when parked if you’d like. **Keep an eye on tank levels, and never let them overflow**, which will cause very significant damage.



The black tank flush port is to inject fresh rinse water into the black tank while it is being drained, rinsing debris off the tank interior. Ensure the black valve is open when flushing so as to not overflow the tank.



- Clean Gloves – on
- Black tank flush hose (black) – Install to rinse water source and RV black tank flush port
- Black & Grey tank valves – verify closed (“in”)
- Waste tube – remove pin/cotter & attach Elbow
- RV Drain – remove RV drain cap & attach hose
- Elbow – insert to septic drain hole
- Black valve – open ... verify drained keep open
- Black tank flush hose – Turn on & let run 5 mins
- Black tank flush hose – Turn off
- Black valve – close
- Grey valve – open ... verify drained, close
- Waste tube – disconnect, clean, dry, stow
- Gloves – off
- Black tank flush hose – Remove, dry, stow
- Your Hands – wash
- Tank level – verify indicators show tanks Empty
- Black Tank Treatment – pour a dose down Toilet per instructions



Enjoying Life at Camp

Doors, Windows, & Security

The grey-colored key can be used for locking the front door and the exterior compartments (except the exterior shower, which uses the silver key). The windows open & close from the inside only. The trailer coupler can be locked in the “Up” position with the included key lock, to ensure nobody runs off with the trailer while its unattended.

Stovetop

The 2-burner stovetop is powered by Propane, so be sure to open the Propane tank valve before use. Light the burner with a lighter from the kitchen drawer. Ensure the burners are fully cooled before closing the glass lid on top over the burners to avoid damage.

Refrigerator

The “3-way” refrigerator can be powered by Battery, Shore Power, or Propane. Before your trip, precool the refrigerator using Shore or Propane, and precool your food in your home fridge. Use Battery only when driving, but note it draws significant power and will consume your entire battery if not monitored. At your campsite, flip quickly back to Shore or Propane. The temperature can be dialed up or down with the thermometer button - for ambient temperatures of ~70deg level 3 is about right. If the refrigerator is beeping that means it isn't getting power – check that the Shore Power / Battery Level / Propane is available and reset it. If propane is not lighting, verify that the tank valve is Open and that there is not air in the line by running the stovetop for a moment.

Vent Fan

The vent fan in the bathroom is powered by DC or Shore power. With the lid down, it circulates air within the camper. With the lid up, it draws fresh air in from open windows to cool and ventilate the camper. Press the On button to cycle through the 4 available speeds. The vent fan is frequently used while cooking.

Furnace Heating

The camper is well-insulated and stays warm with body heat most nights. On particularly cold days, the furnace can be used as well. Ensure that the area in front of the furnace (black grill under dining table) is clear of obstructions. The furnace uses DC power to run the fan, and Propane to heat. If the overhead AC unit is running with the furnace, you need to change the fan mode to Auto on the thermostat.

Air Conditioner Cooling

The camper is well-insulated and stays cool, particularly if the vent fan is used to draw outside air in. On particularly warm days and if Shore Power is connected, the air conditioner can be turned on as well.

Thermostat – Heating & Cooling

The furnace and air conditioner are controlled by the DC thermostat.

- Furnace area inside & out – clear of debris
- Thermostat Power – push On
- Thermostat Temp Arrow – push to see cabin temp (while Mode is “Off”). Pushing Temp Up & Down simultaneously cycles degF/degC display
- Thermostat Mode – push to select Fan mode
- Thermostat Temp Arrows – push as needed to set Fan to Auto
- Thermostat Mode – push to select Heat or Cool or Off as desired
- Thermostat Temp Arrow – push to set desired temp
- Wait... the Furnace/AC starting sequence starts in 12 seconds

Toilet

Flush the toilet (ensure water pump or city water is on) by pulling the handle – a half pull will add water to the bowl, a full pull will open the dump flap to the tank. The plumbing system is not like your home - be careful that only **special RV toilet paper** and tank treatment chemicals go down the toilet. Anything else will be stuck in the tank.

Sinks

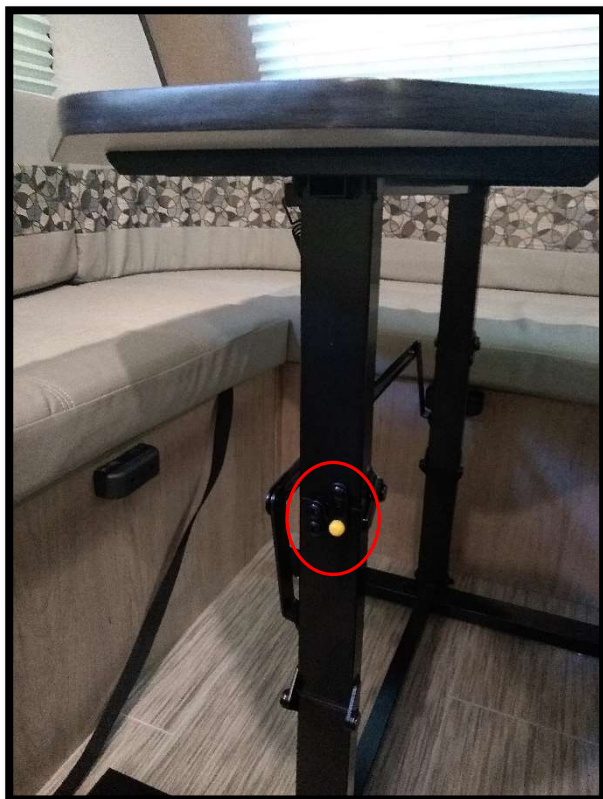
There are two sinks – in the kitchen and bath. To keep it smelling nice and flowing well, do not dump debris or food liquids down the drain, use the trash can instead. Remember to be water-wise and monitor water and tank levels.

Showers

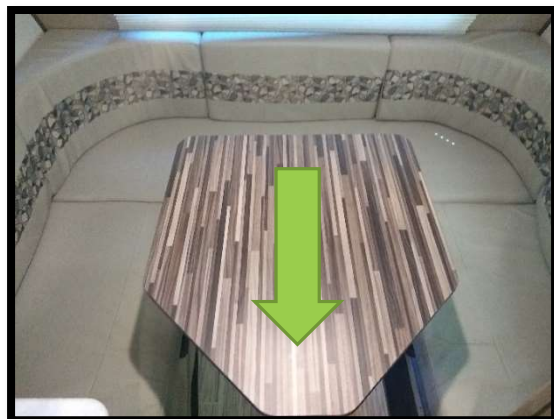
There are two shower heads – in the bathroom and outside. To allow water to flow out of the shower head you may need to push the small On/Off slider valve on the shower head, in addition to turning on the water and diverter. Remember to be water-wise and monitor water and tank levels.

Convert Dining Table to Bed

The dining table converts into a 2-person bed. Bedding is located in the storage compartment under the bench. To fold the table down, open the small latch on the leg, and with your foot on the table foot to hold it steady push very firmly forward/back. The top will rotate down, and can then rest onto the black supports around the bench. The dining back cushions can be repositioned to make the full mattress.



1. RELEASE THIS CATCH & HOLD IT OPEN



2. PULL TOP FORWARD, HOLDING FEET



Indoor/Outdoor Stereo

Runs on DC power, press the red button and select your input. Use the rotating knob to select inside, outside, or both speaker sets.

TV

Runs on Shore Power only, flip the small switch near the TV plug to turn on the antenna amplifier (red light will come on). Remember to turn it off when done, and to stow the TV in the strap. There is a coax cable available in the passthrough if you want to hookup to campsite cable.

Plugs

Powered by Shore Power only, the electrical outlets can be used for plugging in small electrical appliances. There is also a USB plug on the wall above the refrigerator. If you accidentally trip a breaker, reset the GFI plug or the breaker in the box beneath the fridge.

Outdoor Propane Camping Grill (Campsite Supply Drop Package)

Remove the grill from the carrying bag, deploy and attach the metal legs, and install drip tray. Hookup the hose to the grill and to the quick-connect fitting on the outside of the camper. Light by opening the valve at the camper quick-connect and turn the grill on, using the Piezo or a lighter to light. Be sure to keep the hot grill away from the camper, fuels, or combustible materials. This grill is built for pressure-regulated



GRILL ON STAND, DRIP TRAY CIRCLED RED

RV propane systems, never hookup a different grill to the camper quick-connect port, or hookup this grill to a different fuel source. Be sure the grill is cool & relatively clean before putting back into the carry bag.



TRAILER QUICK-CONNECT PORT, VALVE CIRCLED RED

Cleaning

Yellow/white towels and sponges are provided for cleaning the interior. Dr Bronner's soap can be diluted approximately 1:3 with water and used for everything – your hands, your body, washing dishes, cleaning interior walls & surfaces of the camper. It's also a relatively environmentally-friendly soap that can be used outside in a pinch. The bathroom spray cleaner bottle is used for cleaning the bathroom walls, toilet, and floor. Spray disinfectant is used on the waste tank dump system handles and components. Disinfecting wipes are used for wiping down hard surfaces like table, counters, bathroom/toilet surfaces, and handles.

R-Dome Awning

For use to keep the rain or sun off your campsite. The awning is in the large blue bag in the forward under-bunk storage. There are setup directions in the bag – in summary the semi-flexible ridge running the length of the awning slides into the black plastic groove along the top exterior wall of Rocky. The telescoping poles can then be installed to provide support to the roof, and finally the flexible pole can be curved into a U-shape to support the awning. Below is a photo of it installed. Please dry it out after use.



Road Trip!

Planning a trip cross-country? This is a great way to see new destinations, and Rocky excels on long trips. There are a few considerations as you plan your trip.

Route Planning and Campsite Selection

A good approach is to start with a high-level plan of the route and how far you expect to travel each day. You won't be traveling as fast towing a trailer, 200-300 miles will take 4-8 hours depending on road conditions. Once you've targeted an area to stop for a night, you'll want to look for a good campsite. Some good resources are compendium.com, state park websites, and recreation.gov. You can typically find off-grid campsites during the week relatively easily, but for a spot with guaranteed power hookups or for busy weekends you should consider reservations.

Cold Weather

Rocky is a 3-season trailer, meaning he's not designed for winter conditions (temperatures below 35degF). First, the battery performance will degrade in cold weather, and if equipped with the LiFePO4 battery, it must never be charged below freezing. Instead, you'll need to remove and warm the battery before charging. Second, the water systems are exposed to the elements, so freezing weather can cause pipes, valves, and water tanks to freeze or burst, resulting in significant damage. Third, the refrigerator performance will degrade below freezing. Take care to keep Rocky warm!

Maintenance

On extended trips you'll have to perform regular maintenance to keep Rocky rolling – skipping these steps could be dangerous!

Every 600 miles:

- Tires – check lug torque to 110ftlbs (3/4" socket)
- Verify solar charging output & rinse clean solar panels
- Verify works on propane – fridge, water heat, furnace,
- Air Conditioning filters – remove & clean
- Smoke detector – push-to-test
- LP/CO detector – push-to-test
- Fire extinguisher – push-to-test
- Internal water lines – check for leaks, particularly at water pump and kitchen drain trap
- Water & sewer hoses – check for leaks
- Defrost refrigerator if >3mm ice thickness has accumulated on fins
- External panels (fridge, furnace, water heater, shower) – cleanout insects/debris
- Battery box – clear of water/debris
- Exterior – wash off any bird droppings / tar / etc

Every 5000 miles have a professional:

- Repack bearing grease, inspect brakes, inspect wheels, replace as needed

Enjoy!! Thank You!!