

# WELCOME TO “BELLE”

2021 Braxton Creek Bushwhacker Plus 15FK



## CAMPER'S GUIDEBOOK



## Quick Reference

### Key Contacts

- Boundless RV 425-296-2622
- Outdoorsy 877-723-7232

### Safe Towing Numbers

- Trailer max speed = 65 MPH
- Trailer max axle weight = 3,000 lbs
- Trailer max gross weight = 3,260 lbs
- Trailer tongue weight = 10-15% of trailer gross weight
- Trailer weight as-rented (approximate): 2200 lbs gross, with 15% on the tongue
- Always abide by your tow vehicle manual
- Trailer height = 9'
- Ball size = 2"
- Trailer brake controller required on your tow vehicle (available for rent)

### Remember To

- Always operate within weight and balance limits
- Trailer max speed is 65 MPH
- Keep food and debris out of the sinks, drains, and toilets
- Ensure battery never discharges below 50% of capacity
- Ensure camper is kept above freezing temperatures
- Never let people or pets inside the camper while it is moving
- Before return, dump both waste tanks and empty all debris/food from camper to avoid charges
- Have tons of fun!

## Welcome!

Thank you for choosing “Belle the Bushwhacker” - we hope you find her as nimble, quick, and adventurous as we have! After decades of tent-camping and backpacking across the Pacific Northwest, in early 2020 our family decided to purchase our first camping trailer. We spent several dozen nights RVing that summer at destinations near and far. Collected in this book are a few of the tips and notes we’ve picked up along the way. If you need more details, we’ve also included hard copies of the appliance and equipment manuals. Wishing you a fun and memorable camping adventure!

- The Kneale Family

## A Bit About Belle

- Born: November 2020 in Shipshewana, Indiana (Model Year 2021)
- Height: 9' (ground to top of roof-mounted accessories)
- Length: 15'6" (ball coupler to rear bumper)
- Width: 85" (wheel to wheel)
- Weight: Up to 3,260 lbs fully-loaded
- Water Tank Capacities: 21gal Fresh, 18gal Grey, 8.5gal Black, 6gal Hot
- Propane Capacity: up to 40lbs
- Battery Capacity: up to 53AH usable
- Sleeps: 2 adults, plus your pet!
- Superpowers: As our lightest vehicle, Belle is the easy-to-tow and park! Great for couples.

## In This Guidebook

Quick Reference.....	2
Welcome! .....	3
A Bit About Belle.....	3
A Clean and Fully-Equipped Camper .....	4
Pre-Trip: Load, Weigh, and Balance .....	6
On the Road .....	7
Let's Get Hitched! .....	8
We're There! .....	10
Powering Life at Camp .....	12
Enjoying Life at Camp .....	15
Road Trip!.....	18

## A Clean and Fully-Equipped Camper

Before each trip Belle is prepared to the same high standard we'd expect for our family. All mechanical components of the trailer, wheels, and suspension have been inspected and maintained at frequent intervals. The exterior has been cleaned. Inside, all contents were removed so every surface could be fully cleaned and disinfected, bedding/towels laundered, and dishes/cookware washed. Belle is equipped with everything you need for your adventure. Don't hesitate to reach out with questions!

### Included – Cook & Eat

Place settings – Corelle plates and bowls, Stainless Steel cups, forks, knives, spoons	Compostable place settings and utensils (bowls, plates, cups, forks, knives, spoons)
Extra paper towels	Can opener
Medium pot w/ lid	Wine and bottle opener
Pan	Knives - steak & 1 chef
Mixing bowl	Salt, pepper
Kettle	Ziplock bags
Colander	Pen
Collapsible wash tub	Scissors
Cutting board	Hot pad potholder
Spatulas	Kitchen towels
Cooking spoons	Aluminum foil
Tongs	Lighter
Pour-over coffee filter & paper filters	

### Included – Bed & Bath

Extra RV toilet paper	Bedding set (sheets, 2 pillows w/ covers, blanket)
Towels	

### Included – Cleaning & Comfort Supplies

Cleaning cloths (yellow/orange)	Foaming soap dispenser
Broom	Trashbags
Bronner's soap (dilute per instructions)	Trashcan
Bathroom spray cleaner	Sponge
Thetford bio tank treatment	

### Included – Trailer Equipment

Wheel chocks – 1 or 2 pair	10 “stacker” leveling blocks OR 2 leveling ramps
Fresh water hose (blue) and pressure regulator	Sewer tank dump hose & elbow fitting
Black tank rinse hose (black) (if equipped)	Small household toolkit
30A power cord and surge protector	15A-30A power cord adapter
Spare fuse set	Propane tank level gauge
Sewer hose support “slinky”	Flashlight
Camper's Guide & Manuals	Tasty treats & rental paperwork

### Optional – Tow Gear Package

Borrow whatever you need from our available equipment, including:

- Portable Brake Controller – Curt 51180 Echo Mobile Electric Trailer Brake Controller with Bluetooth-Enabled Smartphone Connection, Proportional
- Hitch – Selection of drop hitches with various ball sizes

### Optional – Campsite Supply Drop

Necessities for around camp

- Cooler
- Propane Camping Grill
- Lantern
- Table cloth
- 2 Camp chairs
- Bundle of Firewood

### Optional – Generator Package

Plan to camp off-grid? The Craftsman CMXGIAC3000 gasoline-powered generator provides 2300W of running power – enough to run most appliances or quick-charge a depleted camper battery.

### Optional – Off-Grid Package

Planning to utilize Belle's off-road capabilities to spend some time in the middle of nowhere? Whether primitive sites or dispersed wilderness camping is your plan – this package expands your capabilities and confidence venturing into the great outdoors.

- Increased solar power – 100W portable solar panel added, to supplement rooftop panels
- Supplemental propane – Depart with 30lb instead of 15lb

## Pre-Trip: Load, Weigh, and Balance

To provide a safe journey to your destination it's critical that both Belle and your tow vehicle are correctly loaded and operated at all times within the requirements set by the manufacturers.

### Know Your Tow Vehicle's Capabilities

Since tow vehicles vary greatly, you'll need to refer to your vehicle's manual or the manufacturer to understand the tow limits, axle limits, and gross weight limits of your tow vehicle. You'll want to know how much the vehicle weighs (full gas tank) and how much weight (people & cargo) you want to carry.

### Know Belle's Capabilities

During trailer manufacturing the official weights and limits were printed on the body.

The weight of the cargo should never exceed 615 Kg or 1355 Lbs			
TIRE PNEU	SIZE DIMENSIONS	COLD TIRE PRESSURE PRESSION DES PNEUS A FROID	SEE OWNER'S MANUAL FOR ADDITIONAL INFORMATION  VOIR LE MANUEL DE L'USAGER POUR PLUS DE RENSEIGNEMENTS FD-332
FRONT AVANT	ST235/75R15C	345 KPA / 50 PSI	
REAR ARRIERE	ST235/75R15C	345 KPA / 50 PSI	
SPARE DE SECOURS	ST235/75R15C	345 KPA / 50 PSI	
MANUFACTURED BY/FABRIQUE PAR:		BRAXTON CREEK RV, LLC SHIPSHAWANA, IN	DATE: 11/2020
GVWR/PNBV 1479 KG (3280 LB) GROSS WEIGHT/POIDS TOTAL MAXIMUM 3280 KG (7230 LB)			

Max Axle Weight: 3,000 lbs

Max Gross Weight: 3,260 lbs

Tongue Weight: 10-15% of Gross

To ensure you stay within these requirements, you'll need to limit the weight you're adding to the trailer, and be strategic on how you pack it.

#### TIRE AND LOADING INFORMATION PLACARD

### Verify Belle's Gross Weight Meets Limits

The camper (including the provided equipment, 6gal in the hot tank, and 5~10gal in the fresh tank) weighs approximately 2200 lbs gross, with about 15% of that weight on the tongue. You can add no more food, clothing, water, and gear then the limits provided by the trailer and tow vehicle. If in doubt break out a scale to weigh your cargo, and don't hesitate to drive onto the commercial truck scale in Northbend.

### Verify Belle's Balance Meets Limits

To maintain acceptable tongue and axle weights, you'll need to thoughtfully decide where cargo can be stored. Generally, you want to add cargo evenly around the axle with a preference toward the forward half of the vehicle.

### Watch the Water!

Belle's blessing and her curse are the large-capacity tanks - she can go days without a refresh but also requires careful weight management. Each gallon of water weighs 8.4 lbs, so filling your Fresh and Hot tanks will weigh nearly 250 lbs! As some tanks drain and others fill, the weight distribution will change. While specifics depend on your loading situation, in general you'll usually dump tanks before towing, and travel with black, grey, and fresh tanks no more than about 1/2 full.

## On the Road

Towing demands more attention and care than normal driving - read your tow vehicle's manual carefully and abide by it. Review online articles such as <https://www.boundless-rv.com/towing-safely/> on trailer towing or take a peek at YouTube. Take a few minutes pre-trip in an open parking lot to try out driving, cornering, and parking. Slow and steady will win this race! Of course, having your own kitchen and bathroom with you means you can take your time – enjoy the journey!

## General Tips

**Brakes** – If you've towed smaller trailers in the past, this may be your first experience with electric trailer brakes. The electric brakes on the trailer are designed to work in unison with your tow vehicle, and need to be controlled by a car-mounted or portable brake control unit.

**Speed** - Obey the speed limit for all roads (truck speed if posted). Particularly watch out for turns that require reduced speeds. **Under no circumstances should you exceed 65MPH due to tire speed rating.**

**Cornering** – Remember to keep turns wide like a truck, and that the camper back end will swing out.

**Handling** – Be cognizant of your increased width - narrow roads (for example in construction zones, and some 2-lane rural roads) sometimes allow only a couple inches of clearance on each side. Take it slow.

**Reversing** – You have no rearward visibility - have a spotter outside help guide you!

**Height** – Belle is **9' tall!** Keep an eye out for anything overhead- low bridges, tree branches, or roadside signs to name a few. She is too tall for almost all drive-thru lanes.

**Look down the road and anticipate** – you'll need to brake sooner to stop for obstacles or achieve cornering speeds

## Hills and Mountains

Take it easy – you won't be the fastest one on the road here! Going uphill keep an eye on tow vehicle oil and coolant temperatures – if temperatures start getting too warm then back off the pedal. Simply slowing down and allowing the transmission to downshift does wonders! Don't be shy about using the slow lane to cross Snoqualmie Pass at 40MPH (hazard lights on). Downhill is easier on engine, but you must be careful to keep speed in check and not burn out the tow-vehicle or trailer brakes. Shift your transmission into a lower gear to allow the engine resistance to do the majority of braking for you. Gently pump the brakes in bursts as needed – **never ride the brakes** (they will burn and then fail).

## The Unexpected

**Trailer Sway** – If you encounter the trailer swaying side-to-side, a good response is to activate the trailer brakes manually via the brake controller. Then slow down gradually and consider what caused the sway – is the trailer loaded correctly? Is your speed too high for the conditions?

**Wind Gusts** – Sudden bursts can come from terrain features, windy weather, or passing trucks. For most wind conditions I've had luck simply driving slower. In bad wind you'd want to wait out the weather.

**Flat Tire** – A full-size spare tire is mounted underneath the back bumper. Verify your tow vehicle's jack can hold the trailer's weight. After replacing the tire, step torque the lug nuts in a star-pattern. Calling your included **Outdoorsy Roadside Assistance at 1-877-250-6731** is a great option.



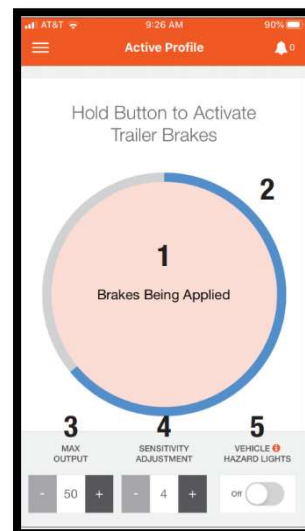
## Let's Get Hitched!



**CURT ECHO INSTALL TO TOW VEHICLE**

### Brake Controller Setup

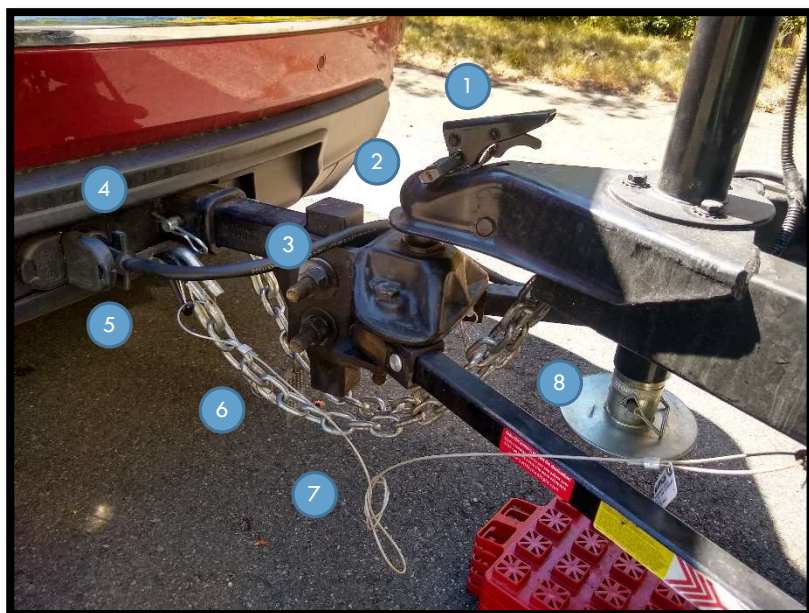
A brake controller on your tow vehicle is required to operate Belle's electric drum brakes. If you have already purchased and installed your own brake controller, remember to recalibrate it for the new trailer. If you don't have one, using our Curt Echo portable brake controller may be a good option. Install the Curt Echo per the [manual](#) and install the app to your phone. Adjust settings as you deem best, I've previously set Max Output to 35 and Sensitivity Adjustment to 3.



**CURT ECHO APP**

### Hitch Gear

You need a hitch with a 2" ball to connect Belle securely to your tow vehicle. Make sure it's properly maintained, all bolts are fully tightened, and it's adjusted properly so Belle will tow level. If you have trouble getting the coupler lock to seat, you may need to move the ball forward in the coupler (try pulling the trailer 1" forward with the coupler unlocked to move it)



**A COMPLETED HITCHUP**

### Elements of a Good Hitch

1. Coupler locked "down"
2. Ball fully-seated in coupler
3. Wiring routed with slack
4. 7-pin connector seated/locked
5. Brake lanyard attached
6. Chains attached and crossed
7. Brake lanyard has slack
8. Tongue jack raised & secure



## Checklist - Prepare for Towing

- **Trailer Weight & Balance – Verified Within Limits**
- Tow Vehicle – weight & balance, fluids, tire pressures verified, see owner's manual
- Brake Controller – installed, calibrated/adjusted, operational
- **Interior Cargo – Secured**
- Thermostat – Off
- Vent Fan – Off
- Water Pump – Off
- Water Heater – Off
- Refrigerator - Off
- Windows, Doors, Overhead Vent – Closed & Locked
- Steps - Stowed
- Tires – pressure@50psi, no uneven wear
- Water & Electrical hookups – Disconnect & stowed
- Exterior Access Panels & Waste Valves – closed
- **Propane – Off**

## Checklist – Hitch Up

- **Trailer chocks – Installed**
- **Trailer Stabilizers – Retracted**
- Trailer Coupler – Unlock & Open
- Tongue Jack – Crank “Up” for ball to fit beneath coupler
- Hitch – Install to hitch receiver, pin & cotter
- Tow Vehicle – Back up to align ball under coupler
- Tow Vehicle Parking Brake – Set
- Tongue Jack – Crank “Down” until full weight of trailer on ball
- Trailer Coupler – Close & Lock
- Tongue Jack- Retract fully to tape line & pin
- Safety Chains – Install crossed
- Brake Breakaway Cable – Install to Tow Vehicle
- Wiring Harness – Install & test from Tow Vehicle
- **Visual Inspection for level trailer and proper connections**
- Trailer chocks – Remove & stow in passthrough
- Trailer passthrough compartment – close & lock

## We're There!

As you arrive at your destination, you'll want to first ensure your campsite will work. Is it generally level? Is there room for Belle and the tow vehicle? Do you want to park at a certain end of the site based on the location of hookups, fire ring, or other considerations? Have your spotter get out and help you into that perfect spot.

### Checklist – Unhitch

- Tow Vehicle Parking Brake - Set
- Campsite – Verify level & safe. Do not park on grade
- Trailer – verify level side-side, if not use stackers to level (see below)
- **Trailer chocks – Installed on front & back sides of both wheels**
- Safety Chains – Remove & stow
- Brake Breakaway Lanyard – Remove & stow
- Wiring Harness – Remove & stow
- Trailer Coupler – Unlock & open
- Tongue Jack – “Up” until hitch ball will clear and tow vehicle can drive forward
- Tow Vehicle – release brake and pull forward
- Tongue Jack – Up or Down as needed until trailer is level forward-back
- **Trailer Stabilizers – extend snug but not overtight (just firm to ground)**



To level Belle side-to-side use stacker leveling blocks. You can make a ramp 1, 2, or 3 levels tall depending on how much lift is needed to achieve level. This photo shows a 2-level lift. Snap the stackers together into a ramp and set just forward or aft of the low tire. Drive the camper onto the stack. Make sure to chock both the front & back wheels before unhooking the tow vehicle!

**After leveling side-to-side, then level front-to-back by raising or lowering the tongue.**

There are a pair of stabilizers on the back end of Belle to keep him steady while you walk inside. Once she's leveled and chocked, then extend the stabilizers using the included crank.

The stabilizers are not rated for lifting the full trailer weight, they just need to be snug.

To avoid tipping over, if the camper is not attached to your tow vehicle, **do not go inside until the stabilizers are deployed.**

## Powering Life at Camp

Belle is equally at home on a hot beach, a dry desert, or a damp forest - each destination drives different considerations to maximize the fun! To keep your crew happy you will continually manage 4 resources: Electricity, Fresh Water, Waste Tank Capacity, and Propane. In a developed campground with full hookups this is easy! Just plug into shore power and water spigots, use what you like, then open up the waste tank dump valves when needed. In primitive campsites you'll need a much more refined approach, and will rely heavily on tools like generators, chargers, and techniques to minimize wasted water.

### Electricity – Battery (12V DC) Power Management

While traveling battery power is all that's available. The battery meter located just inside the front door tracks battery status - hold the "BATTERY" button and the LEDs will indicate if the voltage remaining is "Low", "Fair", "Good", or "Charging". Belle's upgraded battery has a total capacity of 105AH, and can be discharged up to 50%. This means you have 53AH of usable capacity from fully-charged batteries. A red disconnect switch on the battery box can be used to remove all battery power if needed. Belle's battery will charge off your vehicle when driving.



### Electricity – Shore Power (120V AC)

Plugging into "shore power" with the included power cord will charge the battery while providing AC & DC power to numerous appliances. This is the fastest and most reliable method of keeping your camper fully-powered! It's also the only way to power the Air Conditioner and the Plugs.

- Shore Power Pedestal – Off
- Red 15A/30A Adapter- insert to Shore Power Pedestal if 30 Amp plug is not available
- Yellow Surge protector- insert to Shore Pedestal, cycle power briefly to check circuit (2 yellow lights should appear)
- 30A Extension cord – Align Female end to camper receptacle, align, twist clockwise, screw on ring
- 30A Extension cord – Install Male to Surge protector
- Shore Power Pedestal – On



## Electricity – Solar Power (Off-Grid Package)

The solar system supplies additional DC power for appliances or battery charging while on the road or camping away from developed campsites. The red “Solar” switch must be turned On for solar power to flow. Two panels on the roof supply up to 220W of power. Additionally, while parked, a supplemental 100W portable auxiliary panel can be added to the system by plugging into the port near the shore power port. Keep the panels in direct sunlight and pointed at the sun for best performance. When getting good sun, solar power alone is enough to keep the batteries charged under standard usage. It cannot power AC appliances or AC electrical plugs.

## Electricity – Craftsman Generator (Generator Package)

This inverter-generator is capable of providing 2300 running watts (3000W surge). Filling its 1-gallon tank (**89-octane gasoline or higher only**) will give you about 4 hours of run-time (depending on load). It is relatively quiet and is certified for use in all states including California (CARB-compliant). **Never run a generator indoors or near flammable materials.** The [instruction manual](#) provides details on operation. The generator is provided to you with full oil, please check it periodically and top off as needed. It weighs 60lbs, so be careful with yourself! Keep it upright and tie it down during transport so it won't tip.

To hookup Belle to the generator, first start the generator and let it warm up briefly. Turn off the “Main” circuit in Belle's breaker box. Plug the female end of the Shore Power line into Belle (see Shore Power section). Then use the red 15A/30A adapter to plug the male end into the generator. Flick “Main” back on – you should hear the generator load up and Belle's microwave beep on.

This generator provides enough power for any of Belle's appliances individually – trying to run the microwave, AC, and other appliances all simultaneously will overload it and cause it to disconnect. Typically to keep the battery bank charged while camping you'll want to run the generator once or twice a day for 1-2 hours.

## Propane Tanks

Belle carries two standard-sized propane tanks on the tongue – at delivery one will be full (15lbs+) and one partially full. If you need more propane during your trip, tanks can be refilled or exchanged at many gas stations and stores. To remove the tanks or to view the regulator, you will need to remove the black plastic housing by disconnecting one end of the bungee under the tanks.

The propane regulator is equipped with an automatic changeover valve that draws from the tanks sequentially; the changeover lever indicates the primary tank the regulator will draw from first. When the primary tank becomes empty, the regulator will automatically start drawing from the second tank, and the indicator window will turn Red. To remove the empty primary tank, **move the changeover lever to point toward the full tank. Then disconnect the empty tank and replace it.**



DISCONNECT ONE END OF BUNGEE

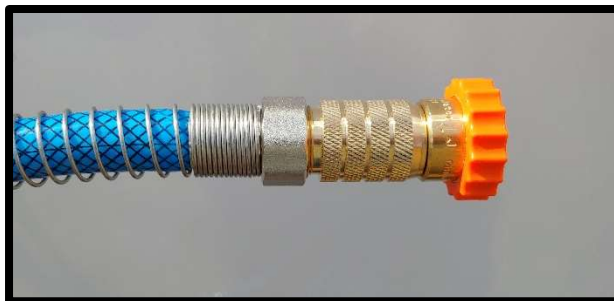
AUTOMATIC  
CHANGEOVER  
REGULATOR





## Water – Fresh Water Supply

Plumbing distributes water to Belle's sink, showers, and toilet. If water is available at your campground, the best approach is to simply hookup to the spigot. **Turn off the Water Pump if hooked to City Water.** Attach the brass pressure-regulator to the spigot, then use the blue fresh water hose to connect the pressure-regulator to Belle's "City Water Connection". You may need to purge air from the lines by running the sink a moment.



If a water spigot is not available or if you are on the road, you'll need to draw water from the Fresh Tank. Fill the tank with the blue hose through the port labeled "Fresh Water Connection", and check approximately how much water is in the tank by pressing "Fresh" on the Tank Status Panel. For reference, most hoses fill at roughly 5gal/minute, but this varies based on pressure. Once there is water in the tank turn on the "Pump" to pull water from the tank into Belle's plumbing system.



## Hot Water Heater

The RV is supplied with a full hot water tank (6gal capacity), which can be heated in approximately 10 minutes. To heat with Propane turn on the "Water Heater LP Gas" switch near the sink (a red "Fault" light staying on means it did not light, verify the Propane tank valve is open, turn the switch Off then On to try again). Or to heat with Shore Power, turn on the "Water Heater Electric" switch on the same panel. **Always ensure there is water in the tank before running the water heater – heating a dry tank can overheat. Turn off when not in use.**

## Dumping the Black & Gray Tanks – It's Not Too Scary!

Waste water tank levels are monitored by pressing “Gray” or “Black” buttons on the Tank Status Panel near the sink. The Gray tank holds water from the sink & shower, the Black tank from the toilet. You can use the “Sidewinder” plastic supports when parked if you’d like to support the hose. **Keep an eye on tank levels, and never let them overflow**, which will cause very significant damage.

- Clean Gloves – on
- Black & Gray Dump Valves – verify closed (“in”)
- Waste Hose – remove from storage beneath vehicle, screw orange funnel onto clear elbow
- RV Waste Drain – remove drain cap & attach hose
- Waste Hoes Elbow – insert into septic drain hole
- Black Dump Valve – open ... verify drained, close
- Gray Dump Valve – open ... verify drained, close
- Waste Hose – Disconnect, clean, dry, stow
- Tank level – verify indicators show tanks Empty
- Black Tank Thetford Bio Treatment – drop one packet down Toilet with 1 gal liquid



OPEN STORAGE TUBE



ATTACH ORANGE FUNNEL TO ELBOW



HOOKUP HOSE TO DUMP VALVES



## Enjoying Life at Camp

### Doors, Windows, & Security

The purple-colored key locks the front door and the small metal key locks the passthroughs. Windows open and close from the inside only. Be sure to double check both emergency-exit latches on the windows are fully-closed and locked before towing. The trailer coupler can be locked in the “Down” position with the included lock, to ensure nobody runs off with the trailer while its unattended. A fire extinguisher, smoke detector, and carbon monoxide detector are equipped in the vehicle for your safety as well.

### Refrigerator

The “3-way” refrigerator can be powered by Shore Power, 12V Battery Power, or Propane. Before your trip, precool the refrigerator using Shore or Propane, and precool your food in your home fridge. When driving use the fridge on 12V. At your campsite, quickly turn the fridge over to Shore Power or Propane. Refrigerator controls are accessed from the lower exterior panel. Turn the quarter-turns horizontal to open.

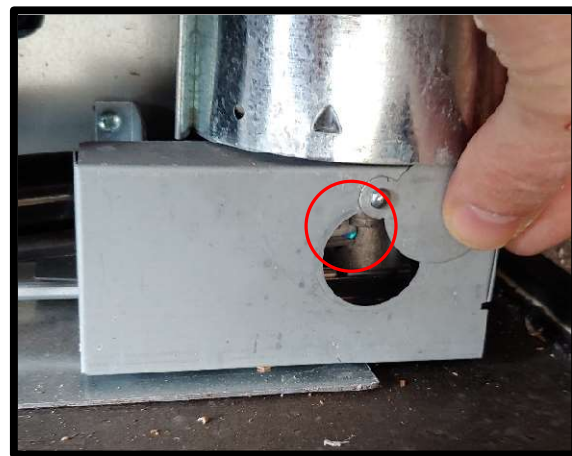


**TURN THESE TO OPEN ACCESS PANEL**



**FRIDGE CONTROLS**

Only use the fridge on one power source at a time. To turn it on 12V Battery power, turn on the Red switch. To turn it on Shore Power, turn on the Green switch. To turn it on Propane power, rotate the gas switch to High, hold the knob down while pressing the ignitor several times. After you hear the fridge light, continue holding the knob 10 more seconds. You can verify it has lit by seeing a small blue flame in the viewing window. Once it has lit, turn it down to Medium. If the propane has not been recently used, or the tanks have been exchanged, it will take several attempts until propane flows to the fridge. If propane is not lighting, verify that the tank valve is Open and that there is not air in the line by lighting the stovetop for a moment.



**BLUE FLAME INDICATES PROPANE HAS LIT**

### Stovetop

The 2-burner stovetop is powered by Propane, so be sure to open the Propane tank valve before use. Light the burner by repeatably pressing the ignitor while holding the gas control on High.

## Vent Fans

You'll want to use the DC-powered vent fan frequently while living in the camper and cooking to keep humidity levels down. The fan will operate once it has been cranked up at least halfway, and can be controlled with the On/Off/Speed switch. Be sure to close the vent before driving.

## Furnace Heating & Thermostat

The camper is well-insulated and stays warm with body heat most nights. On particularly cold days, the furnace can be used as well. Ensure that the area in front of the furnace (black grill under stovetop) is clear of obstructions. The furnace uses DC power to run the fan, and Propane to heat. It is controlled by the DC thermostat. To activate the furnace, push the "Off" lever on top of the thermostat toward the center (you need to push relatively hard), then use the lever under the thermostat to control the heat selection.

## Air Conditioner Cooling

The camper is well-insulated and stays cool, particularly if the vent fan is used to draw outside air in. On particularly warm days and if Shore Power is connected, the air conditioner can be turned on as well with the wall-mounted controls.

## Toilet

Flush the toilet (ensure water pump or city water is on) by stepping on the foot pedal - a half push will add water to the bowl, a full push will open the dump flap to the tank. The plumbing system is not like your home - be careful that only **special RV toilet paper** and tank treatment chemicals go down the toilet. Anything else will be stuck in the tank.

## Sink

There is a sink in the kitchen. To keep it smelling nice and flowing well, do not dump debris or food liquids down the drain, use the trash instead. Remember to be water-wise and monitor water and tank levels.

## Shower

To allow water to flow out of the shower head you may need to push the small On/Off slider valve on the shower head, in addition to turning on the water and diverter. Remember to be water-wise and monitor water and tank levels.

## External Shower

An external shower is provided with Belle that is handy for rinsing people, pets, or anything else off outside the camper. After use be sure to close the door fully with the key before driving!

## Convert Dining Table to Bed

To convert the dining table into a bed, first remove the tabletop. This is done by loosening brackets at the top and bottom of the table post to remove the post and set it aside. Then place the tabletop on the Velcro supports. Next fold the back down by removing the back cushions and **carefully pulling up on the backrest, then allowing it to fold rearward** in the brackets. Cushions can be used to complete the mattress, and a set of bedding is located in the underbunk stowage.



**PULL UP BACKREST, THEN ROTATE**

## Stereo

Runs on DC power, press the Power button to turn it on, hold the Power button to turn it off. Hold "Zone B" button to bring up Settings menu with ability to pair new Bluetooth devices.

## Plugs

Powered by Shore Power, the electrical outlets can be used for plugging in small electrical appliances. If its not working, reset the GFI plug or the breaker at the electrical box beneath the dinette.

## Microwave

Is powered by Shore Power, the instruction manual is included with the camper.

## Cleaning

Yellow/orange towels and sponges are provided for cleaning the interior. Dr Bronner's soap can be diluted 1:3 with water and used for everything – your hands, your body, washing dishes, cleaning interior walls & surfaces of the camper. It's also a relatively environmentally-friendly soap that can be used outside in a pinch. Bathroom cleaner is for the bathroom walls, toilet, and floor; glass cleaner the windows and cooktop; and stainless-steel cleaner on metal surfaces. Commercial-grade disinfecting wipes are used by our staff between rentals but we are not able to provide them to you.

## Outdoor Propane Camping Grill (Campsite Supply Drop Package)

Remove the grill from the carrying bag, deploy and attach the metal legs, and install drip tray. Hookup the hose to the grill and to the quick-connect fitting on the outside of the camper. Light by opening the valve at the camper quick-connect and turn the grill on, using the Piezo or a lighter to light. Be sure to keep the hot grill away from the camper, fuels, or combustible materials. This grill is built for pressure-regulated RV propane systems, never hookup a different grill to the camper quick-connect port, or hookup this grill to a different fuel source. Be sure the grill is cool & relatively clean before putting back into the carry bag.



**GRILL ON STAND, DRIP TRAY CIRCLED RED**



**TURN ON PROPANE PORT BY ROTATING T-VALVE**

## Road Trip!

Planning a trip cross-country? This is a great way to see new destinations, and Belle excels on long trips. There are a few considerations as you plan your adventure.

### Route Planning and Campsite Selection

A good approach is to start with a high-level plan of the route and how far you expect to travel each day. You won't be traveling as fast towing a trailer, 200-300 miles will take 4-8 hours depending on conditions. Once you've targeted an area to stop for a night, you'll want to look for a good campsite. Some good resources are compendium.com, state park websites, and recreation.gov. You can typically find off-grid campsites during the week relatively easily, but for a spot with guaranteed power hookups or busy weekends you should consider reservations.

### Cold Weather

Belle is a 3-season trailer, meaning she's not designed for winter conditions (temperatures below 35degF). First, the battery performance will degrade in cold weather. Second, the water systems are exposed to the elements, so freezing weather can cause pipes, valves, and water tanks to freeze or burst, resulting in significant damage. Third, the refrigerator performance will degrade below freezing. Take care to keep Belle warm!

### Maintenance

On extended trips you'll have to perform regular maintenance to keep Belle rolling – skipping these steps could be dangerous!

#### Every 600 miles:

- Tires – check lug torque
- Verify works on propane – fridge, water heat, furnace
- Air Conditioning filters – remove & clean
- Smoke detector – push-to-test
- LP/CO detector – push-to-test
- Fire extinguisher – push-to-test
- Internal water lines – check for leaks, particularly at water pump and kitchen drain trap
- Water & sewer hoses – check for leaks
- Defrost refrigerator if >3mm ice thickness has accumulated on fins
- External panels (fridge, furnace, water heater) – cleanout insects/debris
- Battery box – clear of water/debris
- Exterior – wash off any bird droppings / tar / etc

#### Every 5000 miles have a professional:

- Repack bearing grease, inspect brakes, inspect wheels, replace as needed

## Enjoy!! Thank You!!